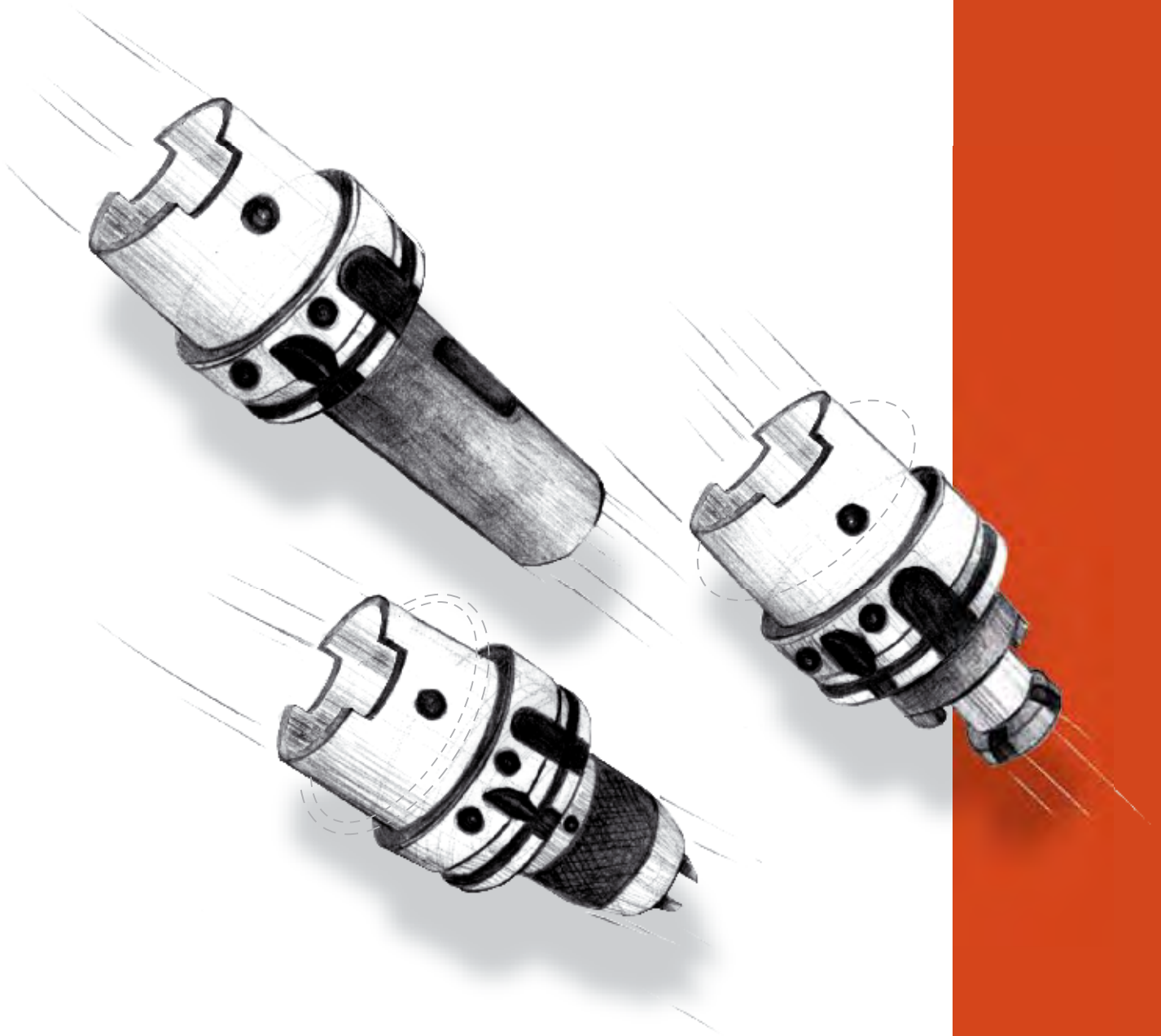




DIN 69893-HSK

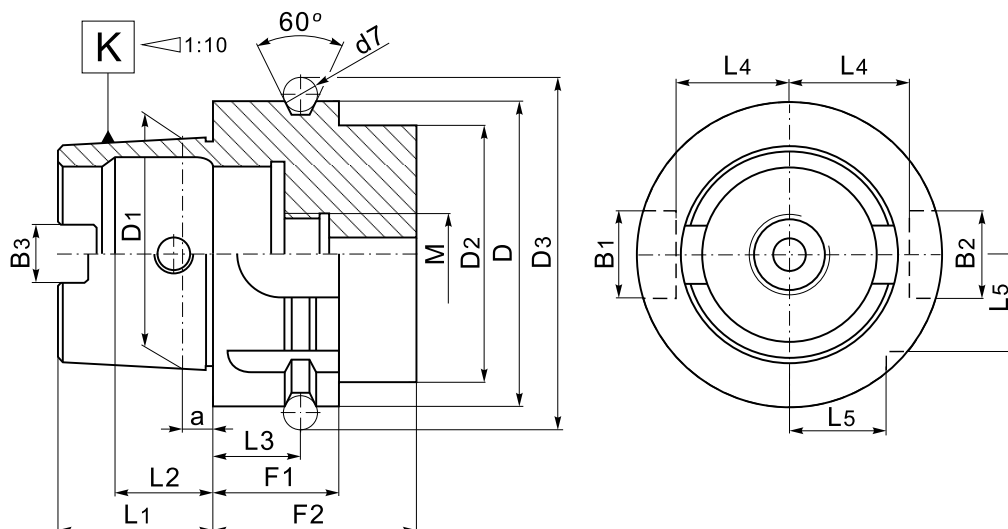


**BISON** BIAL

4

HSK-A SHANKS for automatic tool exchange

CHWYT ze stożkiem HSK-A do wymiany automatycznej



K HSK-A	D	D1	D2max	D3	B1	B2	B3	a	d7
63	63	48	53	72,3	18	16	12,54	6,3	7
100	100	75	85	109,75	22	20	20,02	10	7

K HSK-A	L1	L2	L3	L4	L5	F1	F2	M
63	32	18,13	18	26,5	20	26	42	M18x1
100	50	28,56	20	44	31,5	29	45	M24x1,5

#### STANDARD FEATURES OF TOOLING

- Manufactured with Chrome Manganese steel.
- Carburized with depth of case 0,7 mm.
- Hardened and precision ground.
- Surface Hardness RC 58±2.
- Taper angle: tolerance AT3.
- Balanced in grade G 6,3/20 000 rpm.  
(A fine balance is made on request.)

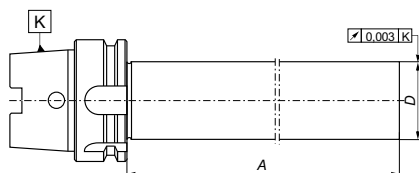
#### CHARAKTERYSTYKA TECHNICZNA WYROBÓW

- Materiał: stal stopowa chromowo-manganowa.
- Nawęglane na głębokość 0,7 mm.
- Hartowane i precyzyjnie szlifowane.
- Twardość powierzchni 58±2 HRC.
- Tolerancja kła kąta AT3.
- Wyważane w klasie G 6,3/20 000 obr/min  
(Inne parametry wyważenia na zamówienie).

## Type 2856

TEST ARBORS

TRZPIENIE KONTROLNE



DIN 69893-A

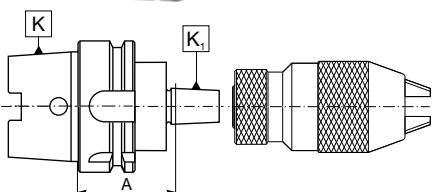
Code No / Kod Nr	K	D	A
0642 128 561 002	63	40	300
0642 128 562 003	100	50	300

Typical order/Sposób zamawiania: 0642 128 561 002 lub 2856-63-40-300

## Type 5390

DRILL CHUCK ADAPTERS for drill chucks taper DIN 238 or Jacobs taper

TRZPIENIE do uchwytów wiertarskich ze stożkiem DIN 238 lub Jacobsa



DIN 69893-A

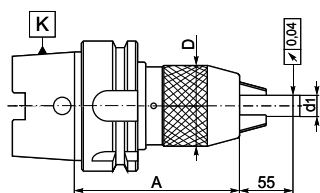
Code No / Kod Nr	K HSK-A	K1 DIN/Jacobs	A
0642 153 908 207	63	B12	45
0642 153 908 309		B16	45
0642 153 908 400		B18	45
0642 153 907 206	63	J1	45
0642 153 907 308		J2	45
0642 153 907 400		J3	45
0642 153 907 807		J33	45
0642 153 907 501		J4	45
0642 153 907 603		J5	45

Typical order/Sposób zamawiania: 0642 153 907 705 lub 5390-63-J6-45

## Type 5391

KEYLESS DRILL CHUCKS with shank

OPRAWKI z uchwytem wiertarskim bezkluczykowym



DIN 69893-A

Code No / Kod Nr	K HSK-A	d1	A	D
0642 153 917 204	63	1-13	150	50
0642 153 917 306		3-16	157	57

Typical order/Sposób zamawiania: 0642 153 917 204 lub 5391-63-13-150

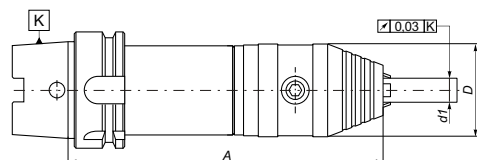
Standard accessories:  
wrench

Wyposażenie podstawowe:  
klucz

## Type 5392

DRILL CHUCKS with exag-key lock system

OPRAWKI z uchwytem wiertarskim kluczykowym



DIN 69893-A

Code No / Kod Nr	K HSK-A	d1	A	D
0642 153 920 206	63	1-13	163	50
0642 153 920 206	63	3-16	163	50
0642 153 920 206	100	1-13	170	50
0642 153 920 206	100	3-16	170	50

Typical order/Sposób zamawiania: 0642 153 920 206 lub 5392-63-13-163

Standard accessories:  
wrench

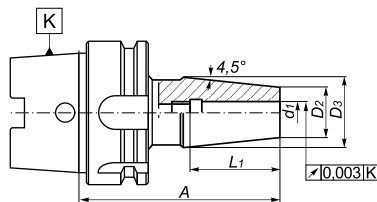
Wyposażenie podstawowe:  
klucz

## Type 7634

DIN 69893-A

### SHRINK FIT HOLDERS

OPRAWKA FREZARSKA z termicznym mocowaniem narzędzi



Code No / Kod Nr	K HSK-A	d1	A	L1	D2	D3
0642 176 340 005	63	3	80	36	10	18
0642 176 341 006		3	120	36	10	18
0642 176 342 007		3	160	36	10	18
0642 176 340 033		4	80	36	10	18
0642 176 341 034		4	120	36	10	18
0642 176 342 035		4	160	36	10	18
0642 176 340 061		5	80	36	16	22
0642 176 341 062		5	120	36	16	22
0642 176 342 063		5	160	36	16	22
0642 176 341 007		6	80	36	21	27
0642 176 341 108		6	120	36	21	27
0642 176 342 109		6	160	36	21	27
0642 176 340 150		8	80	36	21	27
0642 176 341 151		8	120	36	21	27
0642 176 342 152		8	160	36	21	27
0642 176 340 209		10	85	42	24	32
0642 176 341 200		10	120	42	24	32
0642 176 342 200		10	160	42	24	32
0642 176 340 252		12	90	47	24	32
0642 176 341 253		12	120	47	24	32
0642 176 342 254		12	160	47	24	32
0642 176 340 280		14	90	47	27	34
0642 176 341 281		14	120	47	27	34
0642 176 342 282		14	160	47	27	34
0642 176 340 300		16	95	50	27	34
0642 176 341 201		16	120	50	27	34
0642 176 342 302		16	160	50	27	34
0642 176 340 339		18	95	50	33	42
0642 176 341 330		18	120	50	33	42
0642 176 342 330		18	160	50	33	42
0642 176 340 354		20	100	52	33	42
0642 176 341 355		20	120	52	33	42
0642 176 342 356		20	160	52	33	42
0642 176 340 402		25	115	58	44	53
0642 176 341 403		25	120	58	44	53
0642 176 342 404		25	160	58	44	53
0642 176 340 456		32	115	58	44	53

Code No / Kod Nr	K HSK-A	d1	A	L1	D2	D3
0642 176 340 504	100	6	85	36	21	27
0642 176 341 505		6	120	36	21	27
0642 176 342 506		6	160	36	21	27
0642 176 340 558		8	85	36	21	27
0642 176 341 559		8	120	36	21	27
0642 176 342 550		8	160	36	21	27
0642 176 340 606		10	90	42	24	32
0642 176 341 607		10	120	42	24	32
0642 176 342 608		10	160	42	24	32
0642 176 340 650		12	95	47	24	32
0642 176 341 650		12	120	47	24	32
0642 176 342 651		12	160	47	24	32
0642 176 340 708		14	95	47	27	34
0642 176 341 709		14	120	47	27	34
0642 176 342 700		14	160	47	27	34
0642 176 340 751		16	100	50	27	34
0642 176 341 752		16	120	50	27	34
0642 176 342 753		16	160	50	27	34
0642 176 340 800		18	100	50	33	42
0642 176 341 800		18	120	50	33	42
0642 176 342 801		18	160	50	33	42
0642 176 340 853		20	105	52	33	42
0642 176 341 854		20	120	52	33	42
0642 176 342 855		20	160	52	33	42
0642 176 340 901		25	115	58	44	53
0642 176 341 902		25	120	58	44	53
0642 176 340 955		32	120	58	44	53
0642 176 341 956		32	160	58	44	53

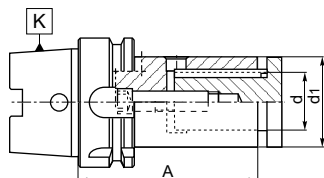
Typical order/Sposób zamawiania: 0642 176 341 956 lub 7634-100-32-160




## Type 7872

DIN 69893-A

### MILLING ARBORS for staggered tooth side milling cutters

TRZPIENIE FREZARSKIE do frezów tarczowych



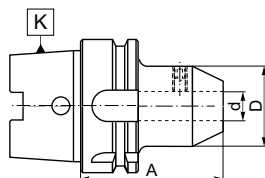
Code No / Kod Nr	K 7:24	d	d1	A	Capacity/ Zakres			
0642 178 722 158	63	16	29	125	0-16	W-4988/0	U-6511/0	U-6527/0
0642 178 722 250		22	36	125	0-20	W-4989/0	U-6513/0	U-6529/0
0642 178 722 453		27	42	125	0-20	W-4989/0	U-6515/0	U-6531/0
0642 178 722 555		32	50	125	0-20	W-4989/0	U-6517/0	U-6533/0

Typical order/Sposób zamawiania: 0642 178 722 555 lub 7872-63-32-125

## Type 7885

**END MILL ADAPTERS** for cutters with cylindrical shank and weldon flat DIN 1835-B

**OPRAWKI ZACISKOWE** do narzędzi z chwytem walcowym Weldon'a DIN 1835-B



## DIN 69893-A

Code No / Kod Nr	K HSK-A	d	A	D	
0642 178 853 005	63	6	65	25	U-4131/0
0642 178 853 059		6	120	25	U-4131/0
0642 178 853 061		6	160	25	U-4131/0
0642 178 853 107		8	65	28	U-4132/0
0642 178 853 150		8	120	28	U-4132/0
0642 178 853 163		8	160	28	U-4132/0
0642 178 853 209		10	65	35	U-4133/0
0642 178 853 252		10	120	35	U-4133/0
0642 178 853 265		10	160	35	U-4133/0
0642 178 853 300		12	80	42	U-4134/0
0642 178 853 354		12	120	42	U-4134/0
0642 178 853 402		14	80	44	U-4134/0
0642 178 853 454		14	120	44	U-4134/0
0642 178 853 504		16	80	48	U-4135/0
0642 178 853 532		16	120	48	U-4135/0
0642 178 853 606		18	80	50	U-4135/0
0642 178 853 708		20	80	52	U-4136/0
0642 178 853 800		25	110	63	U-4137/0 U-4137/0
0642 178 853 901		32	110	72	U-4138/0 U-4138/0
0642 178 855 109	100	6	80	25	U-4131/0
0642 178 855 200		8	80	28	U-4132/0
0642 178 855 302		10	80	35	U-4133/0
0642 178 855 404		12	80	42	U-4134/0
0642 178 855 506		14	80	44	U-4134/0
0642 178 855 608		16	100	48	U-4135/0
0642 178 855 700		18	100	50	U-4135/0
0642 178 855 801		20	100	20	U-4136/0
0642 178 855 903		25	100	63	U-4137/0 U-4137/0
0642 178 856 008		32	100	72	U-4138/0 U-4138/0
0642 178 856 100		40	105	80	U-4138/0 U-4138/0

Typical order/Sposób zamawiania: 0642 178 853 901 or 7885-63-32-110

## Type 7886

**END MILL ADAPTERS TYPE WHISTLE-NOTCH** for tools with cylindrical shank and inclined flat DIN 1835-E

**OPRAWKI ZACISKOWE TYPU WHISTLE-NOTCH** do narzędzi z chwytem walcowym ze spłaszczeniem klinowym DIN 1835-E

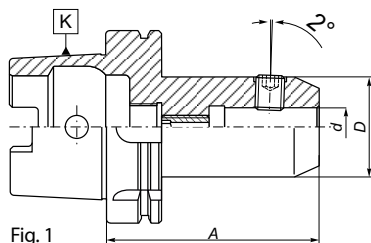


Fig. 1

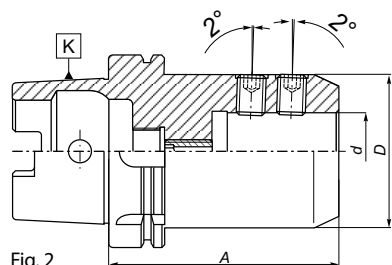


Fig. 2

## DIN 69893-A

Code No / Kod Nr	K HSK-A	d	A	D	fig.		
0642 178 865 107	100	6	90	25	1	U-4131/0	U-1599/0
0642 178 865 209		8	90	28	1	U-4132/0	U-6317/0
0642 178 865 300		10	90	35	1	U-4133/0	U-0293/0
0642 178 865 402		12	100	42	1	U-4134/0	U-0757/0
0642 178 865 504		14	100	44	1	U-4135/0	U-6318/0
0642 178 865 606		16	100	48	1	U-4135/0	U-6318/0
0642 178 865 708		18	100	50	1	U-4136/0	U-6318/0
0642 178 865 800		20	100	52	1	U-4136/0	U-6318/0
0642 178 865 901		25	120	65	2	U-4137/0 U-4137/0	U-6318/0
0642 178 866 006		32	120	72	2	U-4138/0 U-4138/0	U-6318/0
0642 178 866 108		40	120	80	2	U-4138/0 U-4137/0	U-6318/0

Typical order/Sposób zamawiania: 0642 178 866 108 or 7886-100-40-120

## Type 7887

**COLLET CHUCKS ER** for tool with cylindrical shank

**OPRAWKI ZACISKOWE (do tulejek ER DIN 6499)** do narzędzi z chwytem walcowym



**Standard accessories:**

Nut - page 121  
screw

**Optional accessories:**

Collets - page 107  
wrench - page 121



**Wyposażenie podstawowe:**

Nakrętka - str. 121  
wkreś

**Wyposażenie dodatkowe:**

Tulejki zaciskowe - str. 107  
klucz - str. 121

## DIN 69893-A

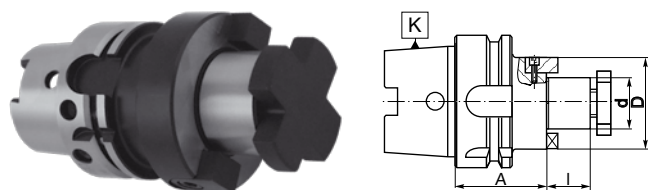
Code No / Kod Nr	K 7:24	Collet	A	Capacity Zakres	D		
0642 178 873 103	63	ER11	63	2-7	16	9833-11S	M8x1x8LH
0642 178 873 116		ER11	100	2-7	16	9833-11S	M8x1x8LH
0642 178 873 220		ER16	90	2-10	32	9833-16 ES	M10x11LH
0642 178 878 110		ER16	100	2-10	32	9833-16 ES	M10x11LH
0642 178 878 212		ER16	120	2-10	32	9833-16 ES	M10x11LH
0642 178 873 261		ER16	160	2-10	32	9833-16 ES	M10x11LH
0642 178 873 307		ER25	80	2-16	42	9833-25 ES	M8x16
0642 178 873 363		ER25	160	2-16	42	9833-25 ES	M8x16
0642 178 873 409		ER32	100	2-20	50	9833-32 ES	M10x20
0642 178 873 440		ER32	160	2-20	50	9833-32 ES	M10x20
0642 178 873 500		ER40	120	2-26	63	9833-40 ES	M12x30
0642 178 875 509	100	ER25	100	2-16	42	9833-25ES	M8x16
0642 178 875 400		ER32	100	2-20	50	9833-32ES	M10x20
0642 178 875 502		ER40	120	2-26	63	9833-40ES	M12x30

Typical order/Sposób zamawiania: 0642 178 873 307 lub 7887-63-25-80



## Type 7888

**SHELL MILL ADAPTERS** for cutter with driving slot DIN 138

**TRZPIENIE FREZARSKIE ZABIERAKOWE** do frezów z rowkiem zabierakowym DIN 138



## DIN 69893-A

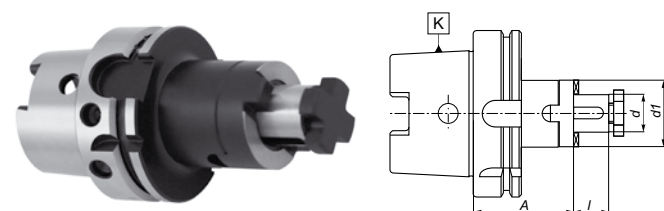
Code No / Kod Nr	K HSK-A	d	A	I	D		
0642 178 883 101	63	16	45	17	32	U-0620/0	S-2117/0
0642 178 883 155		16	80	17	32	U-0620/0	S-2117/0
0642 178 883 285		16	145	17	32	U-0620/0	S-2117/0
0642 178 883 305		22	50	19	40	U-0621/0	S-2121/0
0642 178 883 333		22	80	19	40	U-0621/0	S-2121/0
0642 178 883 387		22	150	19	40	U-0621/0	S-2121/0
0642 178 883 407		27	60	21	48	U-0622/0	S-2111/0
0642 178 883 489		27	155	21	48	U-0622/0	S-2111/0
0642 178 883 509		32	60	24	58	U-0623/0	W-3649/0
0642 178 883 600		40	60	27	70	U-0623/0	W-3651/0
0642 178 884 102	100	22	50	19	40	U-0621/0	S-2121/0
0642 178 884 204		27	50	21	48	U-0622/0	S-2111/0
0642 178 884 306		32	50	24	58	U-0623/0	W-3649/0
0642 178 884 408		40	60	27	70	U-0624/0	S-2124/0
0642 178 884 500		50	70	30	90	U-0625/0	U-5974/0

Typical order/Sposób zamawiania: 0642 178 883 101 lub 7888-63-16-45

## Type 7889

**COMBINATION SHELL MILL ADAPTERS** for cutters with keyway or driving slot DIN 138

**TRZPIENIE FREZARSKIE UNIWERSALNE** do frezów z rowkiem wpustowym lub rowkiem zabierakowym w/g DIN 138



## DIN 69893-A

Code No / Kod Nr	K HSK-A	d	A	I	d1			
0642 178 895 101	100	16	60	17	32	U-0620/0	U-1364/0	U-1355/0
0642 178 895 203		22	60	19	40	U-0621/0	U-1365/0	U-1356/0
0642 178 895 305		27	60	21	48	U-0622/0	U-1366/0	U-1357/0
0642 178 895 407		32	60	24	58	U-0623/0	U-1367/0	U-1358/0
0642 178 895 509		40	70	27	70	U-0624/0	U-1368/0	U-1359/0

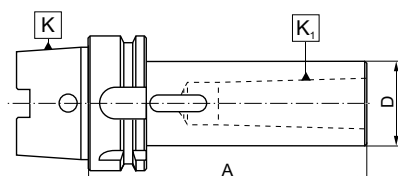
Typical order/Sposób zamawiania: 0642 178 895 509 lub 7889-100-40-70



## Type 7890

**REDUCING ADAPTERS** for tools with Morse taper and tang  
DIN 228-B shank

**TULEJE REDUKCYJNE** do narzędzi z chwytem Morse'a z płetwą wg DIN 228-B



## DIN 69893-A

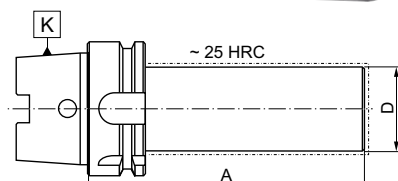
Code No / Kod Nr	K HSK-A	K1 Morse	A	D
0642 178 903 157	63	1	100	25
0642 178 903 287		2	120	32
0642 178 903 363		3	140	40
0642 178 903 478		4	160	48
0642 178 904 104	100	1	110	25
0642 178 904 206		2	120	32
0642 178 904 308		3	150	40
0642 178 904 400		4	170	48
0642 178 904 501		5	200	63
0642 178 904 603		6	260	82

Typical order/Sposób zamawiania: 0642 178 903 157 lub 7890-63-1-100

## Type 7891

**BLANK ADAPTERS**

**TRZPIEŃ-PÓLFABRYKAT**



## DIN 69893-A

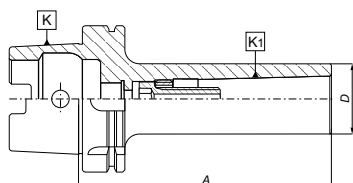
Code No / Kod Nr	K HSK-A	D	A
0642 178 913 101	63	63	150
0642 178 913 511		80	250
0642 178 314 102	100	97	250

Typical order/Sposób zamawiania: 0642 178 913 101 lub 7891-63-63-150

## Type 7892

**REDUCING ADAPTERS** for tools with Morse taper shank  
and drawbar thread DIN 228-A

**TULEJE REDUKCYJNE** do narzędzi z chwytem Morse'a  
z gwintem wg DIN 228-A



## DIN 69893-A

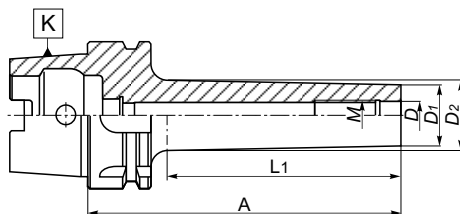
Code No / Kod Nr	K HSK-A	K1	D	A	
0642 178 925 101	100	1	25	110	W-1091/0
0642 178 925 203		2	32	120	W-1092/0
0642 178 925 J05		3	40	150	W-1093/0
0642 178 925 J05		4	48	170	W-1094/0
0642 178 925 509		5	63	200	C-0220/0

Typical order/Sposób zamawiania: 0642 178 925 509 lub 7892-100-5-200

## Type 7895

**ADAPTERS** for screw in type mills

**OPRAWKA** do frezów wkręcanych



## DIN 69893-A

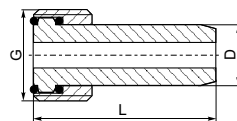
Code No / Kod Nr	K HSK-A	M	A	D	D1	D2	L1
0642 178 953 104	63	M8	59	8,5	13	15	25
0642 178 953 206		M8	84	8,5	13	23	50
0642 178 953 308		M8	109	8,5	13	23	75
0642 178 953 400		M8	134	8,5	13	25	100
0642 178 954 105		M10	59	10,5	18	20	25
0642 178 954 207		M10	84	10,5	18	25	50
0642 178 954 309		M10	109	10,5	18	28	75
0642 178 954 400		M10	134	10,5	18	30	100
0642 178 954 502		M10	159	10,5	18	34	125
0642 178 955 106		M12	59	12,5	21	24	25
0642 178 955 208		M12	84	12,5	21	24	50
0642 178 955 300		M12	109	12,5	21	31	75
0642 178 955 401		M12	134	12,5	21	30	100
0642 178 955 503		M12	159	12,5	21	34	125
0642 178 956 106		M16	59	17	29	34	25
0642 178 956 209		M16	84	17	29	34	50
0642 178 956 300		M16	109	17	29	34	75
0642 178 956 402		M16	134	17	29	39	100
0642 178 956 504		M16	159	17	29	39	125

Typical order/Sposób zamawiania: 0642 178 956 504 lub 7895-63-M16-159

## Type 1313

**COOLANT TUBE**

**ZŁĄCZE RUROWE**



## DIN 69893-A

Code No / Kod Nr	K HSK-A	G	L	D
0642 813 130 104	63	M18x1	36,5	12
0642 813 130 308	100	M24x1,5	43,5	16

Typical order/Sposób zamawiania: 0642 813 130 104 lub 1313-63





DIN 6327  
DIN 1835  
DIN 6499  
DIN 6388 ...

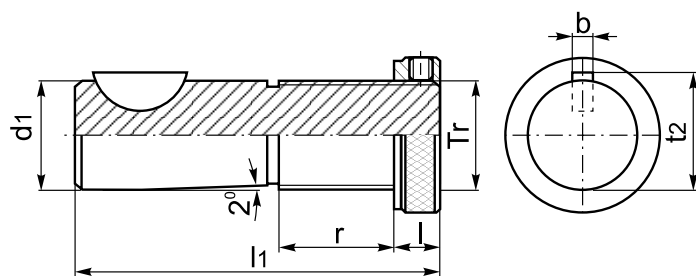


**BISON** BIAL

6

## DIN 6327

AXIALLY ADJUSTABLE SHANK  
CHWYT Z REGULACJĄ OSIOWĄ

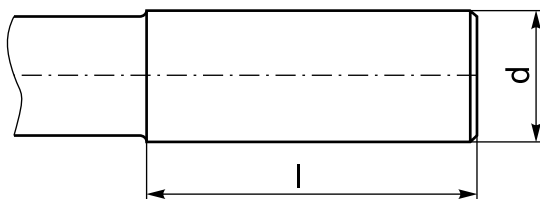


Tr	d1	l1	l	r	b	t2
Tr 16x1,5	16	85	12	28	5	17,1
Tr 20x2	20	88	12	28	5	21,1
Tr 28x2	28	95	12	30	6	29,5
Tr 36x2	36	118	14	36	8	37,5
Tr 48x2	48	144	18	47	10	49,9

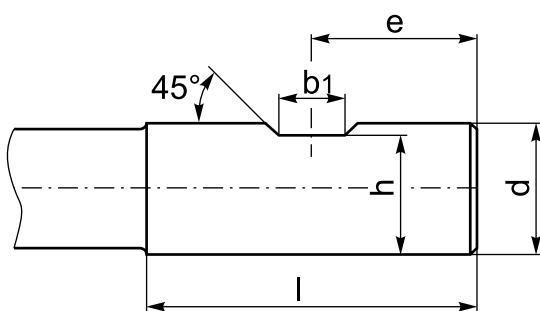
## DIN 1835

STRAIGHT SHANK  
CHWYT WALCOWY

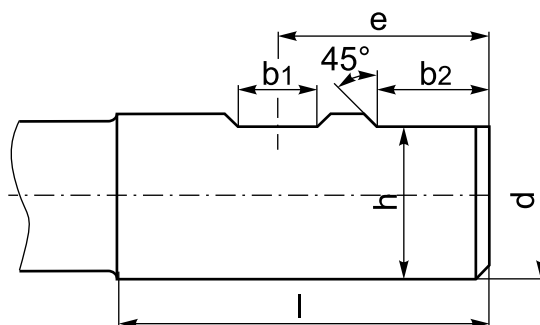
Form A  
Odmiana A



Form B - with one clamping flat (Weldon)  
Odmiana B - z jednym spłaszczeniem (Weldon)  
d = 6 ÷ 20 mm



Form B - with two clamping flat (Weldon)  
Odmiana B - z dwoma spłaszczeniami (Weldon)  
d = 25 ÷ 32 mm



d h6	l	b1	b2	h h11	e
6	36	4,2	-	5,1	18,0
8	36	5,5	-	6,9	18,0
10	40	7,0	-	8,5	20,0
12	45	8,0	-	10,4	22,5
14	45	8,0	-	12,7	22,5
16	48	10,0	-	14,2	24,0
18	48	10,0	-	16,2	24,0
20	50	11,0	-	18,2	25,0
25	56	12,0	17	23,0	32,0
32	60	14,0	19	30,0	35,0

### STANDARD FEATURES OF TOOLING

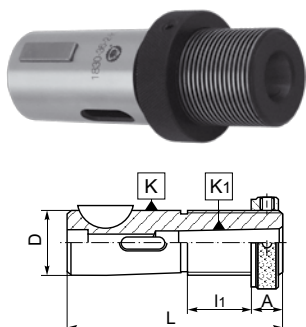
- Manufactured with Chrome Manganese steel.
- Carburized with depth of case 0,7 mm.
- Hardened and precision ground.
- Surface Hardness RC 58±2.

### CHARAKTERYSTYKA TECHNICZNA WYROBÓW

- Materiał: stal stopowa chromowo-manganowa.
- Nawęglane na głębokość 0,7 mm.
- Hartowane i precyzyjnie szlifowane.
- Twardość powierzchni 58±2 HRC.

## Type 1830

ADJUSTABLE ADAPTERS for tools with Morse taper shank  
TULEJE Z REGULACJĄ OSIOWĄ do narzędzi z chwytem Morse'a



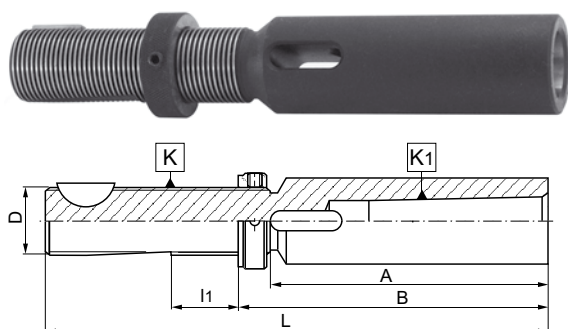
## DIN 6327

Code No / Kod Nr	K D	K1 Morse	L	l1	A	
0642 118 300 117	16	1	85	28	12	Z-1275/0
0642 118 300 219	20	1	88	28	12	Z-1276/0
0642 118 300 514	28	1	95	30	12	Z-1278/0
0642 118 300 616		2	95	30	12	Z-1278/0
0642 118 300 718	36	1	118	36	14	Z-1279/0
0642 118 300 810		2	118	36	14	Z-1279/0
0642 118 300 911		3	118	36	14	Z-1279/0
0642 118 301 016	48	1	144	47	18	Z-1280/0
0642 118 301 118		2	144	47	18	Z-1280/0
0642 118 301 210		3	144	47	18	Z-1280/0
0642 118 301 311		4	144	47	18	Z-1280/0

Typical order/Sposób zamawiania: 0642 118 301 311 lub 1830-48-4-K

## Type 1831

ADJUSTABLE ADAPTERS for tools with Morse taper shank  
TULEJE Z REGULACJĄ OSIOWĄ do narzędzi z chwytem Morse'a



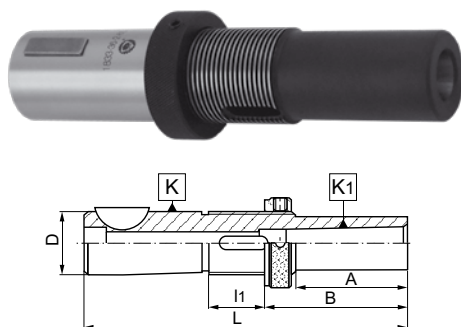
## DIN 6327

Code No / Kod Nr	K D	K1 Morse	L	A	l1	B	
0642 118 311 116	16	1	164	79	28	91	Z-1275/0
0642 118 311 218		2	179	94	28	106	Z-1275/0
0642 118 311 910	20	2	182	94	28	106	Z-1276/0
0642 118 313 810	28	3	212	117	30	129	Z-1278/0
0642 118 315 211	36	4	264	146	36	160	Z-1279/0

Typical order/Sposób zamawiania: 0642 118 315 211 lub 1831-36-4-K

## Type 1833

ADJUSTABLE ADAPTERS for tools with Morse taper shank  
TULEJE Z REGULACJĄ OSIOWĄ do narzędzi z chwytem Morse'a



## DIN 6327

Code No / Kod Nr	K D	K1 Morse	A	L	l1	B	
0642 118 332 202	28	1	25	120	30	37	Z-1278/0
0642 118 332 304		1	50	145	30	62	Z-1278/0
0642 118 332 406		1	75	170	30	87	Z-1278/0
0642 118 333 203	28	2	25	120	30	37	Z-1278/0
0642 118 333 305		2	50	145	30	62	Z-1278/0
0642 118 333 407		2	75	170	30	87	Z-1278/0
0642 118 333 509		2	100	195	30	112	Z-1278/0
0642 118 334 204	36	2	30	148	36	44	Z-1279/0
0642 118 334 306		2	60	178	36	74	Z-1279/0
0642 118 334 408		2	90	208	36	104	Z-1279/0
0642 118 334 500		2	120	238	36	134	Z-1279/0
0642 118 335 205		3	30	148	36	44	Z-1279/0
0642 118 335 307		3	60	178	36	74	Z-1279/0
0642 118 335 409		3	90	208	36	104	Z-1279/0
0642 118 335 500		3	120	238	36	134	Z-1279/0
0642 118 336 206	48	3	40	184	47	58	Z-1280/0
0642 118 336 308		3	80	224	47	98	Z-1280/0
0642 118 336 400		3	120	264	47	138	Z-1280/0
0642 118 336 501		3	160	304	47	178	Z-1280/0
0642 118 337 207		4	40	184	47	58	Z-1280/0
0642 118 337 309		4	80	224	47	98	Z-1280/0
0642 118 337 400		4	120	264	47	138	Z-1280/0
0642 118 337 502		4	160	304	47	178	Z-1280/0

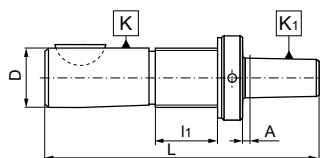
Typical order/Sposób zamawiania: 0642 118 337 502 lub 1833-48-4-160

Code No / Kod Nr	K D	K1 Morse	A	L	l1	B	
0642 118 330 200	16	1	25	110	28	37	Z-1275/0
0642 118 330 302		1	50	135	28	62	Z-1275/0
0642 118 330 404		1	75	160	28	87	Z-1275/0
0642 118 330 506		1	100	185	28	112	Z-1275/0
0642 118 331 201	20	1	25	135	28	37	Z-1276/0
0642 118 331 303		1	50	138	28	62	Z-1276/0
0642 118 331 405		1	75	163	28	87	Z-1276/0
0642 118 331 507		1	100	188	28	112	Z-1276/0

## Type 5365

ADJUSTABLE ADAPTERS for drill chucks with DIN 238 taper

TRZPIENIE Z REGULACJĄ OSIOWĄ do uchwytów wiertarskich ze stożkiem DIN 238



## DIN 6327

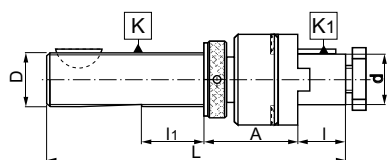
Code No / Kod Nr	K D	K1 DIN	L	I1	A	
0642 153 653 214	20	B12	111	28	4.5	Z-1276/0
0642 153 653 316		B16	117	28	5,0	Z-1276/0
0642 153 655 216	28	B12	118	30	4.5	Z-1278/0
0642 153 655 318		B16	124	30	5,0	Z-1278/0
0642 153 655 410		B18	132	30	5,0	Z-1278/0
0642 153 656 319	36	B16	147	36	5,0	Z-1279/0
0642 153 656 410		B18	155	36	5,0	Z-1279/0
0642 153 656 512		B22	163	36	4.5	Z-1279/0
0642 153 657 310	48	B16	173	47	5,0	Z-1280/0
0642 153 657 411		B18	181	47	5,0	Z-1280/0
0642 153 657 513		B22	189	47	4.5	Z-1280/0

Typical order/Sposób zamawiania: 0642 153 657 513 lub 5365-48-B22-K

## Type 7510

ADJUSTABLE ADAPTERS for cutters with keyway or driving slot DIN 138

TRZPIENIE Z REGULACJĄ OSIOWĄ do frezów z rowkiem wpustowym lub rowkiem zabierakowym DIN 138



## DIN 6327

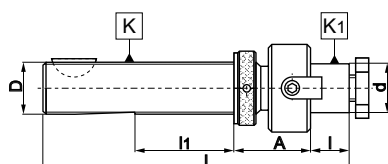
Code No / Kod Nr	K D	K1 d	L	I1	A	I			
0642 175 103 312	20	16	133	20	50	17	U-0620/0	U-1364/0	Z-1276/0
0642 175 103 414		22	138	20	50	19	U-0621/0	U-1365/0	Z-1276/0
0642 175 105 314	28	16	140	30	50	17	U-0620/0	U-1364/0	Z-1278/0
0642 175 105 416		22	145	30	50	19	U-0621/0	U-1365/0	Z-1278/0
0642 175 105 518		27	155	30	50	21	U-0622/0	U-1366/0	Z-1278/0
0642 175 105 610		32	155	30	50	24	U-0623/0	U-1367/0	Z-1278/0
0642 175 106 315	36	16	165	36	50	17	U-0620/0	U-1364/0	Z-1279/0
0642 175 106 417		22	170	36	50	19	U-0621/0	U-1365/0	Z-1279/0
0642 175 106 519		27	175	36	50	21	U-0622/0	U-1366/0	Z-1279/0
0642 175 106 610		32	180	36	50	24	U-0623/0	U-1367/0	Z-1279/0
0642 175 107 316	48	16	190	47	50	17	U-0620/0	U-1364/0	Z-1280/0
0642 175 107 418		22	195	47	50	19	U-0621/0	U-1365/0	Z-1280/0
0642 175 107 510		27	200	47	50	21	U-0622/0	U-1366/0	Z-1280/0
0642 175 107 611		32	205	47	50	24	U-0623/0	U-1367/0	Z-1280/0
0642 175 107 713		40	210	47	50	27	U-0624/0	U-1368/0	Z-1280/0

Typical order/Sposób zamawiania: 0642 175 107 713 lub 7510-48-40-K

## Type 7520

ADJUSTABLE ADAPTERS for cutters with driving slot DIN 138

TRZPIENIE Z REGULACJĄ OSIOWĄ do frezów z rowkiem zabierakowym DIN 138



## DIN 6327

Code No / Kod Nr	K D	K1 d	L	I1	A	I		
0642 175 200 009	28	16	140	30	36	17	U-0620/0	Z-1278/0
0642 175 200 100		22	142	30	36	19	U-0621/0	Z-1278/0
0642 175 220 113		27	144	30	36	21	U-0622/0	Z-1278/0
0642 175 200 202		32	149	30	38	24	U-0623/0	Z-1278/0
0642 175 200 215	36	16	163	36	38	17	U-0620/0	Z-1279/0
0642 175 200 304		22	165	36	38	19	U-0621/0	Z-1279/0
0642 175 200 317		27	167	36	38	21	U-0622/0	Z-1279/0
0642 175 200 406		32	172	36	40	24	U-0623/0	Z-1279/0
0642 175 200 419	48	16	189	47	42	17	U-0620/0	Z-1280/0
0642 175 200 508		22	191	47	42	19	U-0621/0	Z-1280/0
0642 175 200 510		27	193	47	42	21	U-0622/0	Z-1280/0
0642 175 200 600		32	198	47	44	24	U-0623/0	Z-1280/0
0642 175 200 612		40	202	47	45	27	U-0624/0	Z-1280/0

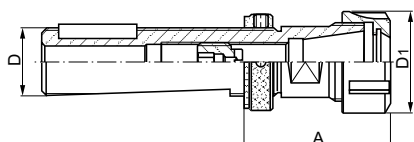
Typical order/Sposób zamawiania: 0642 175 200 612 lub 7520-48-40-K



## Type 7813

## DIN 6327

COLLET CHUCKS ER for tool with cylindrical shank

OPRAWKI ZACISKOWE (do tulejek ER DIN 6499) do narzędzi z chwytem walcowym



Code No / Kod Nr	D	Collet Tulejka	A	Capacity Zakres	D1		
0642 178 131 006	28	ER25	60	2-16	42	9833-25	M16x1,5x17LH
0642 178 131 200		ER32	70	2-20	50	9833-32	M16x1,5x17LH
0642 178 131 403	36	ER32	65	2-20	50	9833-32	M18x1,5x19LH
0642 178 131 607		ER40	78	3-26	63	9833-40	M18x1,5x19LH
0642 178 131 902	48	ER40	82	3-26	63	9833-40	M18x1,5x19LH

Typical order/Sposób zamawiania: 0642 178 131 902 lub 7813-48-40-82

**Standard accessories:**

Nut - page 121  
screw

**Wyposażenie podstawowe:**

Nakrętka - str. 121  
wkreć

**Optional accessories:**

Collets - page 107  
wrench - page 121

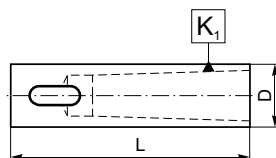
**Wyposażenie dodatkowe:**

Tulejki zaciskowe - str. 107  
klucz - str. 121

## Type 1875

ADAPTERS for tools with Morse taper

TULEJE REDUKCYJNE do narzędzi z chwytem Morse'a



- Completely hardened, ground internally and externally
- Cała tuleja hartowana, szlifowany stożek wewnętrzny i średnica zewnętrzna

## DIN 1835

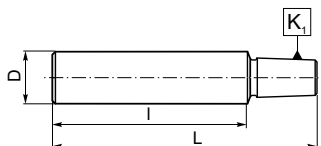
Code No / Kod Nr	D	K1 Morse	L
0642 118 753 005	20	1	75
0642 118 753 107	25	1	75
0642 118 754 607		1	89
0642 118 753 209		2	75
0642 118 754 709		2	100
0642 118 754 800	32	1	89
0642 118 753 252		1	100
0642 118 753 300		2	100
0642 118 753 402		3	100
0642 118 754 108		3	120
0642 118 754 902	40	1	89
0642 118 753 456		1	100
0642 118 753 504		2	100
0642 118 753 606		3	100
0642 118 754 200		3	120
0642 118 753 708		4	120
0642 118 754 301		4	152
0642 118 755 109	50	2	100
0642 118 754 403		3	120
0642 118 754 505		4	152

Typical order/Sposób zamawiania: 0642 118 753 504 lub 1875-40-2-100

## Type 5348

DRILL CHUCK MANDRELS for drill chucks taper DIN 238

TRZPIENIE do uchwytów wiertarskich ze stożkiem DIN 238



- Completely hardened and ground
- Cały trzpień hartowany i szlifowany

## DIN 1835

Code No / Kod Nr	D	I	K1 DIN	L
0642 153 480 005	8	35	B10	55.5
0642 153 480 300	10	48	B12	72.5
0642 153 480 107		50	B10	69.5
0642 153 480 209		50	B12	74.5
0642 153 480 211		50	B16	83.5
0642 153 480 504	12	50	B16	83.5
0642 153 480 606		60	B16	93.5
0642 153 480 708	16	50	B16	81.0
0642 153 480 812		70	B16	101.0
0642 153 480 800		70	B18	110.0
0642 153 481 108	20	30	B16	63.0
0642 153 481 505		60	B12	87.0
0642 153 481 200		60	B16	93.0
0642 153 481 607		60	B18	100.0
0642 153 481 301	25	75	B16	109.0
0642 153 481 416	30	70	B16	106.0
0642 153 481 403		70	B18	112.0

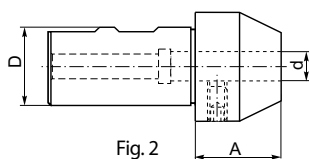
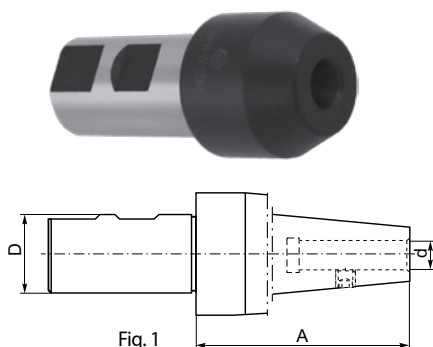
Typical order/Sposób zamawiania: 0642 153 480 504 lub 5348-12x50-B16



## Type 7622

**REDUCING BUSHINGS** for cutters with cylindrical shank and weldon flat DIN 1835-B

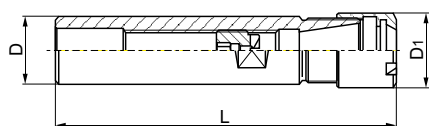
**REDUKTORY** do narzędzi z chwytem walcowym Weldon'a DIN 1835-B



## Type 7812

**COLLET CHUCKS ER** for tool with cylindrical shank

**OPRAWKI ZACISKOWE (do tulejek ER DIN 6499)** do narzędzi z chwytem walcowym



## Type 7812

**COLLET CHUCKS ER – SET** for tool with cylindrical shank

**OPRAWKI ZACISKOWE ER - KOMPLET** do narzędzi z chwytem walcowym



## DIN 1835

Code No / Kod Nr	D	d	A	Fig.	
0642 176 220 103	20	6	30	2	U-4131/0
0642 176 220 205		8	30	2	U-4132/0
0642 176 220 307		10	30	2	U-4133/0
0642 176 220 409		12	35	2	U-4134/0
0642 176 221 104	32	6	25	2	U-4131/0
0642 176 221 206		8	25	2	U-4132/0
0642 176 221 308		10	30	2	U-4133/0
0642 176 221 400		12	35	2	U-4134/0
0642 176 221 501		14	40	2	U-4134/0
0642 176 221 603		16	40	2	U-4135/0
0642 176 221 705		18	40	2	U-4136/0
0642 176 221 807		20	40	2	U-4136/0
0642 176 222 105	40	8	175	1	U-7381/0
0642 176 222 207		10	175	1	U-7381/0
0642 176 222 309		12	175	1	U-7381/0
0642 176 222 400		16	175	1	S-2628/0
0642 176 222 502		20	175	1	S-2628/0
0642 176 222 604		25	175	1	S-2628/0
0642 176 222 706		32	180	1	S-2628/0

Typical order/Sposób zamawiania: 0642 176 221 807 lub 7622-32-20

## DIN 1835

Code No / Kod Nr	D	Collet Tulejka	L	Capacity Zakres	D1		
0642 178 122 421	16	ER16	160	2-10	22	9833-16S	M10x11LH
0642 178 121 420	20	ER16	100	2-10	22	9833-16S	M12x1,5x14LH
0642 178 120 007		ER16	160	2-10	22	9833-16S	M12x1,5x14LH

Typical order/Sposób zamawiania: 0642 178 120 007 lub 7812-20-16-160

**Standard accessories:**

Nut - page 121  
screw

**Wyposażenie podstawowe:**

Nakrętka - str. 121  
wkret

**Optional accessories:**

Collets - page 107  
wrench - page 121

**Wyposażenie dodatkowe:**

Tulejki zaciskowe - str. 107  
klucz - str. 121

## DIN 1835

Code No / Kod Nr	D	Collet Tulejka	L	Capacity Zakres	Full set pieces Ilość tulejek
0642 178 122 406	16	ER16	160	2-10	8
0642 178 121 405	20	ER16	100	2-10	8
0642 178 120 200		ER16	160	2-10	8

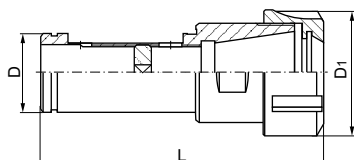
Typical order/Sposób zamawiania: 0642 178 120 200 lub 7812-20-16-160 SET





## Type 7815

COLLET CHUCKS ER for tool with cylindrical shank

OPRAWKI ZACISKOWE (do tulejek ER DIN 6499) do narzędzi z chwytem walcowym



Code No / Kod Nr	D	Collet Tulejka	L	Capacity Zakres	D1		
0642 178 151 206	32	ER32	110	2-20	50	9833-32	M22x1,5x10LH
0642 178 152 207	40	ER32	117	2-20	50	9833-32	M22x1,5x10LH

Typical order/Sposób zamawiania: 0642 178 152 207 lub 7815-40-32

### Standard accessories:

Nut - page 121  
screw

### Wyposażenie podstawowe:

Nakrętka - str. 121  
wkreć

### Optional accessories:

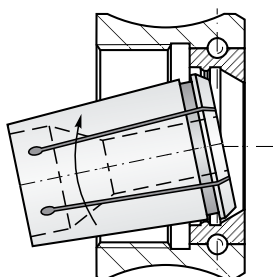
Collets - page 107  
wrench - page 121

### Wyposażenie dodatkowe:

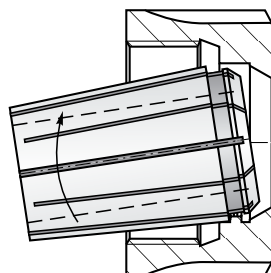
Tulejki zaciskowe - str. 107  
klucz - str. 121

# CLAMPING OF TOOLS IN COLLET HOLDERS

## MOCOWANIE NARZĘDZI W TULEJKACH ZACISKOWYCH



- To use, first insert the collet into the chuck nut by squeezing the collet and pressing
- It's face into the chuck nut's collar ring until the collet's collar is fully seated
- Then load the collet into the chuck
- Put the tool into the collet's hole and clamp the nut by the wrench
- For collet removal simply squeeze the collet while pulling it from chuck nut at the angle.

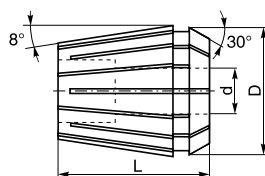


- Do nakrętki wkładamy tulejkę pod kątem
- Zaczepić kanałkiem tulejki o mimiśrodkowy występ nakrętki (dla 7618) lub o cylindryczny występ nakrętki (dla 7642)
- Wcisnąć tulejkę w nakrętkę i włożyć do oprawki
- W tulejkę włożyć narzędzie i dokręcić nakrętkę
- Przy wyjmowaniu tulejki należy czynności wykonać w odwrotnej kolejności.

## Type 7618

COLLETS ER (DIN 6499) for tool with cylindrical shank

TULEJKI ZACISKOWE ER (DIN 6499) do narzędzi z chwytem cylindrycznym



Code No / Kod Nr	Collet Tulejka	Range Zakres	D	L
0642 176 180 003	ER16	3-2	17	27,5
0642 176 180 105		4-3	17	27,5
0642 176 180 207		5-4	17	27,5
0642 176 180 309		6-5	17	27,5
0642 176 180 400		7-6	17	27,5
0642 176 180 502		8-7	17	27,5
0642 176 180 604		9-8	17	27,5
0642 176 180 706		10-9	17	27,5
0642 176 181 004	ER20	3-2	21	31,5
0642 176 181 106		4-3	21	31,5
0642 176 181 208		5-4	21	31,5
0642 176 181 300		6-5	21	31,5
0642 176 181 401		7-6	21	31,5
0642 176 181 503		8-7	21	31,5
0642 176 181 605		9-8	21	31,5
0642 176 181 707		10-9	21	31,5
0642 176 181 809		11-10	21	31,5
0642 176 181 900		12-11	21	31,5
0642 176 182 005		13-12	21	31,5
0642 176 183 505	ER25	3-2	26	34,0
0642 176 183 607		4-3	26	34,0
0642 176 183 709		5-4	26	34,0
0642 176 183 800		6-5	26	34,0
0642 176 183 902		7-6	26	34,0
0642 176 184 007		8-7	26	34,0
0642 176 184 109		9-8	26	34,0
0642 176 184 200		10-9	26	34,0
0642 176 184 302		11-10	26	34,0
0642 176 184 404		12-11	26	34,0
0642 176 184 506		13-12	26	34,0
0642 176 184 608		14-13	26	34,0
0642 176 184 700		15-14	26	34,0
0642 176 184 801		16-15	26	34,0

Code No / Kod Nr	Collet Tulejka	Range Zakres	D	L
0642 176 185 100	ER32	3-2	33	40,0
0642 176 185 201		4-3	33	40,0
0642 176 185 303		5-4	33	40,0
0642 176 185 405		6-5	33	40,0
0642 176 185 507		7-6	33	40,0
0642 176 185 609		8-7	33	40,0
0642 176 185 700		9-8	33	40,0
0642 176 185 802		10-9	33	40,0
0642 176 185 904		11-10	33	40,0
0642 176 186 009		12-11	33	40,0
0642 176 186 100		13-12	33	40,0
0642 176 186 202		14-13	33	40,0
0642 176 186 304		15-14	33	40,0
0642 176 186 406		16-15	33	40,0
0642 176 186 508		17-16	33	40,0
0642 176 186 600		18-17	33	40,0
0642 176 186 701		19-18	33	40,0
0642 176 186 803		20-19	33	40,0
0642 176 187 101	ER40	3-2	41	46,0
0642 176 187 203		4-3	41	46,0
0642 176 187 305		5-4	41	46,0
0642 176 187 407		6-5	41	46,0
0642 176 187 509		7-6	41	46,0
0642 176 187 600		8-7	41	46,0
0642 176 187 702		9-8	41	46,0
0642 176 187 804		10-9	41	46,0
0642 176 187 906		11-10	41	46,0
0642 176 188 000		12-11	41	46,0
0642 176 188 102		13-12	41	46,0
0642 176 188 204		14-13	41	46,0
0642 176 188 306		15-14	41	46,0
0642 176 188 408		16-15	41	46,0
0642 176 188 500		17-16	41	46,0
0642 176 188 601		18-17	41	46,0
0642 176 188 703		19-18	41	46,0
0642 176 188 805		20-19	41	46,0
0642 176 188 907		21-20	41	46,0
0642 176 189 001		22-21	41	46,0
0642 176 189 103		23-22	41	46,0
0642 176 189 205		24-23	41	46,0
0642 176 189 307		25-24	41	46,0
0642 176 189 409		26-25	41	46,0

Typical order/Sposób zamawiania: 0642 176 180 003 lub 7618-3-16

## Type 7618

COLLETS ER (DIN 6499) for tool with cylindrical shank

TULEJKI ZACISKOWE ER (DIN 6499) do narzędzi z chwytem cylindrycznym



Code No / Kod Nr	Collet Tulejka	Range Zakres d	Full set pieces Ilość tulejek
0642 176 180 808	ER16	2-10	8
0642 176 182 107	ER20	2-13	11
0642 176 184 896	ER25	2-16	14
0642 176 186 816	ER32	2-20	18
0642 176 189 411	ER40	2-26	24

## Type 7600

ER COLLETS - SET (without chuck) for SA, BT, DIN

TULEJKI ZACISKOWE ER - KPL (bez oprawki) do SA, BT, DIN



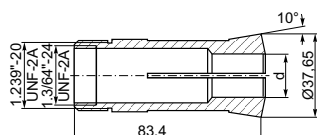
Code No / Kod Nr	Size Wielkość	7:24	Collet 7618 ER DIN 6499	Pcs.	Capacity Zakres	A max
0642 176 000 000	30-16-8-80	30	16-3,4,5,6,7,8,9,10	8	2-10	80
0642 176 000 306	30/40-32-8-80	30, 40	32-6,8,10,12,14,16,18,20	8	5-20	80
0642 176 000 805	30/40-32-8-80PL	30, 40	32-4,5,6,8,10,12,16,20	8PL	3-20	80
0642 176 000 859	30/40-32-18-80	30, 40	32-3,4,5,6,7,8,9,10,11,12, 13,14,15,16,17,18,19,20	18	2-20	80
0642 176 000 887	40-25-14-60	40	25-3,4,5,6,7,8,9,10,11,12, 13,14,15,16	14	2-16	60
0642 176 000 950	40-32-10-70	40	32-3,4,6,8,10,12,14,16,18,20	10	2-20	70
0642 176 000 907	40-32-18-80-130	40	32-3,4,5,6,7,8,9,10,11,12,13, 14,15,16,17,18,19,20	18	2-20	80-130
0642 176 001 001	40-40-24-80	40	40-3,4,5,6,7,8,9,10,11,12,13, 14,15,16,17,18,19,20,21, 22,23,24,25,26	24	2-26	80
0642 176 001 409	50-32-8-70PL	50	32-4,5,6,8,10,12,16,20	8PL	3-20	70
0642 176 001 452	50-32-18-130	50	32-3,4,5,6,7,8,9,10,11,12,13, 14,15,16,17,18,19,20	18	2-20	130
0642 176 001 500	50-40-24-130	50	40-3,4,5,6,7,8,9,10,11,12,13, 14,15,16,17,18,19,20,21, 22,23,24,25,26	24	2-26	130
0642 176 000 874	40-16-8-150S	40	16-3,4,5,6,7,8,9,10	8	2-10	150
0642 176 001 205	50-16-8-150S	50	16-3,4,5,6,7,8,9,10	8	2-10	150

Typical order/Sposób zamawiania: 0642 176 000 000 lub 7600-30-16-8-80

## Type 3000

### COLLETS 5C

#### TULEJKI ZACISKOWE 5C



Code No / Kod Nr	Size Wielkość	D
0642 830 000 002	5C-3	3
0642 830 000 104	5C-4	4
0642 830 000 186	5C-5	5
0642 830 000 262	5C-6	6
0642 830 000 400	5C-7	7
0642 830 000 440	5C-8	8
0642 830 000 481	5C-9	9
0642 830 000 542	5C-10	10
0642 830 000 603	5C-11	11
0642 830 000 644	5C-12	12
0642 830 000 685	5C-13	13
0642 830 000 720	5C-14	14
0642 830 000 761	5C-15	15
0642 830 000 807	5C-16	16
0642 830 000 848	5C-17	17
0642 830 000 889	5C-18	18
0642 830 000 924	5C-19	19
0642 830 000 965	5C-20	20
0642 830 001 003	5C-21	21
0642 830 001 044	5C-22	22
0642 830 001 085	5C-23	23
0642 830 001 120	5C-24	23
0642 830 001 161	5C-25	25
0642 830 001 207	5C-26	26

Typical order/Sposób zamawiania: 0642 830 000 002 lub 3000-5C-3

## Type 3000

### COLLETS 5C - SET

#### TULEJKI ZACISKOWE 5C - KOMPLET



Code No / Kod Nr	Collet Tulejka	Range Zakres d	Full set pieces Ilość tulejek
0642 830 004 403	5C	3-26	24
0642 830 004 505	5C	3-25	45

Typical order/Sposób zamawiania: 0642 830 004 403 lub 3000-5C-3-26

# Type 3010-48

DIN 6343

DEAD LENGHT COLLETS 173E

TULEJE ZACISKOWE 173E do automatów tokarskich

Profil otworu



EG  
cylinder  
gładki

plain



EO  
cylinder  
rowkowany

cross



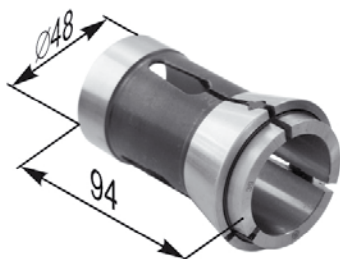
S  
6-kąt

hexagone



K  
kwadrat

square



Symbol	Profil	KTM
3010-48-1 EG	1	0642 830 102 103
3010-48-2 EG	2	0642 830 102 129
3010-48-3 EG	3	0642 830 102 205
3010-48-4 EG	4	0642 830 102 220
3010-48-5 EG	5	0642 830 102 246
3010-48-6 EG	6	0642 830 102 261
3010-48-7 EG	7	0642 830 102 287
3010-48-8 EG	8	0642 830 102 310
3010-48-9 EG	9	0642 830 102 335

Symbol	Profil	KTM
3010-48-9 EO	9	0642 830 102 322
3010-48-10 EO	10	0642 830 102 348
3010-48-11 EO	11	0642 830 102 363
3010-48-12 EO	12	0642 830 102 389
3010-48-13 EO	13	0642 830 102 409
3010-48-14 EO	14	0642 830 102 424
3010-48-15 EO	15	0642 830 102 440
3010-48-16 EO	16	0642 830 102 465
3010-48-17 EO	17	0642 830 102 480
3010-48-18 EO	18	0642 830 102 500
3010-48-19 EO	19	0642 830 102 526
3010-48-20 EO	20	0642 830 102 541
3010-48-21 EO	21	0642 830 102 567
3010-48-22 EO	22	0642 830 102 582
3010-48-23 EO	23	0642 830 102 602
3010-48-24 EO	24	0642 830 102 628
3010-48-25 EO	25	0642 830 102 643
3010-48-26 EO	26	0642 830 102 669
3010-48-27 EO	27	0642 830 102 684
3010-48-28 EO	28	0642 830 102 704
3010-48-29 EO	29	0642 830 102 720
3010-48-30 EO	30	0642 830 102 745
3010-48-31 EO	31	0642 830 102 760
3010-48-32 EO	32	0642 830 102 786
3010-48-33 EO	33	0642 830 102 806
3010-48-34 EO	34	0642 830 102 821
3010-48-35 EO	35	0642 830 102 847
3010-48-36 EO	36	0642 830 102 862
3010-48-37 EO	37	0642 830 102 888
3010-48-38 EO	38	0642 830 102 908
3010-48-39 EO	39	0642 830 102 923
3010-48-40 EO	40	0642 830 102 949
3010-48-41 EO	41	0642 830 102 964
3010-48-42 EO	42	0642 830 102 980

Symbol	Profil	KTM
3010-48-4 S	4	0642 830 105 004
3010-48-5 S	5	0642 830 105 020
3010-48-6 S	6	0642 830 105 045
3010-48-7 S	7	0642 830 105 060
3010-48-8 S	8	0642 830 105 086
3010-48-9 S	9	0642 830 105 106
3010-48-10 S	10	0642 830 105 121
3010-48-11 S	11	0642 830 105 147
3010-48-12 S	12	0642 830 105 162
3010-48-13 S	13	0642 830 105 188
3010-48-14 S	14	0642 830 105 208
3010-48-15 S	15	0642 830 105 223
3010-48-16 S	16	0642 830 105 249
3010-48-17 S	17	0642 830 105 264
3010-48-19 S	19	0642 830 105 300
3010-48-22 S	22	0642 830 105 366
3010-48-24 S	24	0642 830 105 401
3010-48-27 S	27	0642 830 105 468
3010-48-30 S	30	0642 830 105 529
3010-48-32 S	32	0642 830 105 560
3010-48-36 S	36	0642 830 105 646

Symbol	Profil	KTM
3010-48-4 K	4	0642 830 106 005
3010-48-5 K	5	0642 830 106 020
3010-48-6 K	6	0642 830 106 046
3010-48-7 K	7	0642 830 106 061
3010-48-8 K	8	0642 830 106 087
3010-48-9 K	9	0642 830 106 107
3010-48-10 K	10	0642 830 106 122
3010-48-11 K	11	0642 830 106 148
3010-48-12 K	12	0642 830 106 163
3010-48-13 K	13	0642 830 106 189
3010-48-14 K	14	0642 830 106 209
3010-48-16 K	16	0642 830 106 224
3010-48-17 K	17	0642 830 106 237
3010-48-18 K	18	0642 830 106 240
3010-48-20 K	20	0642 830 106 265
3010-48-22 K	22	0642 830 106 280
3010-48-24 K	24	0642 830 106 300
3010-48-25 K	25	0642 830 106 326
3010-48-28 K	28	0642 830 106 341
3010-48-30 K	30	0642 830 106 367

## Type 3010-66

**DIN 6343**
**DEAD LENGHT COLLETS 185 E**
**TULEJE ZACISKOWE 185 E do automatów tokarskich**
**Profil otworu**

**EG**  
cylinder  
gładki

plain


**EO**  
cylinder  
rowkowany

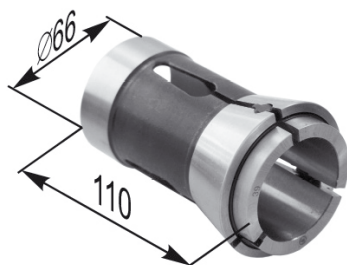
cross


**S**  
6-kąt

hexagone


**K**  
kwadrat

square



Symbol	Profil	KTM
3010-66-3 EG	3	0642 830 103 364
3010-66-4 EG	4	0642 830 103 400
3010-66-5 EG	5	0642 830 103 425
3010-66-6 EG	6	0642 830 103 440
3010-66-7 EG	7	0642 830 103 466
3010-66-8 EG	8	0642 830 103 494
3010-66-9 EG	9	0642 830 103 514

Symbol	Profil	KTM
3010-66-9 EO	9	0642 830 103 501
3010-66-10 EO	10	0642 830 103 527
3010-66-11 EO	11	0642 830 103 542
3010-66-12 EO	12	0642 830 103 568
3010-66-13 EO	13	0642 830 103 583
3010-66-14 EO	14	0642 830 103 603
3010-66-15 EO	15	0642 830 103 629
3010-66-16 EO	16	0642 830 103 644
3010-66-17 EO	17	0642 830 103 660
3010-66-18 EO	18	0642 830 103 685
3010-66-19 EO	19	0642 830 103 705
3010-66-20 EO	20	0642 830 103 720
3010-66-21 EO	21	0642 830 103 746
3010-66-22 EO	22	0642 830 103 761
3010-66-23 EO	23	0642 830 103 787
3010-66-24 EO	24	0642 830 103 807
3010-66-25 EO	25	0642 830 103 822
3010-66-26 EO	26	0642 830 103 848
3010-66-27 EO	27	0642 830 103 863
3010-66-28 EO	28	0642 830 103 889
3010-66-29 EO	29	0642 830 103 909
3010-66-30 EO	30	0642 830 103 924
3010-66-31 EO	31	0642 830 103 940
3010-66-32 EO	32	0642 830 103 965
3010-66-33 EO	33	0642 830 103 980
3010-66-34 EO	34	0642 830 103 003
3010-66-35 EO	35	0642 830 103 029
3010-66-36 EO	36	0642 830 103 044
3010-66-37 EO	37	0642 830 103 060
3010-66-38 EO	38	0642 830 103 085
3010-66-39 EO	39	0642 830 103 105
3010-66-40 EO	40	0642 830 103 120
3010-66-41 EO	41	0642 830 103 146
3010-66-42 EO	42	0642 830 103 161
3010-66-43 EO	43	0642 830 103 187
3010-66-44 EO	44	0642 830 103 207
3010-66-45 EO	45	0642 830 103 222
3010-66-46 EO	46	0642 830 103 248
3010-66-47 EO	47	0642 830 103 263
3010-66-48 EO	48	0642 830 103 289
3010-66-49 EO	49	0642 830 103 309
3010-66-50 EO	50	0642 830 103 324
3010-66-51 EO	51	0642 830 103 340
3010-66-52 EO	52	0642 830 103 365
3010-66-53 EO	53	0642 830 103 380
3010-66-54 EO	54	0642 830 103 400
3010-66-55 EO	55	0642 830 103 426
3010-66-56 EO	56	0642 830 103 441
3010-66-57 EO	57	0642 830 103 467
3010-66-58 EO	58	0642 830 103 482
3010-66-59 EO	59	0642 830 103 502
3010-66-60 EO	60	0642 830 103 528

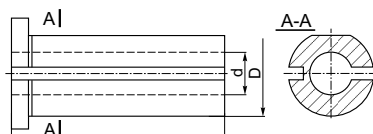
Symbol	Profil	KTM
3010-66-4 S	4	0642 830 107 006
3010-66-5 S	5	0642 830 107 021
3010-66-6 S	6	0642 830 107 047
3010-66-7 S	7	0642 830 107 062
3010-66-8 S	8	0642 830 107 088
3010-66-9 S	9	0642 830 107 108
3010-66-10 S	10	0642 830 107 123
3010-66-11 S	11	0642 830 107 149
3010-66-12 S	12	0642 830 107 164
3010-66-13 S	13	0642 830 107 180
3010-66-14 S	14	0642 830 107 200
3010-66-15 S	15	0642 830 107 225
3010-66-16 S	16	0642 830 107 240
3010-66-17 S	17	0642 830 107 266
3010-66-19 S	19	0642 830 107 281
3010-66-22 S	22	0642 830 107 301
3010-66-24 S	24	0642 830 107 327
3010-66-27 S	27	0642 830 107 342
3010-66-30 S	30	0642 830 107 368
3010-66-32 S	32	0642 830 107 383
3010-66-36 S	36	0642 830 107 403
3010-66-38 S	38	0642 830 107 429
3010-66-41 S	41	0642 830 107 444
3010-66-46 S	46	0642 830 107 460
3010-66-50 S	50	0642 830 107 485

Symbol	Profil	KTM
3010-66-4 K	4	0642 830 108 007
3010-66-5 K	5	0642 830 108 022
3010-66-6 K	6	0642 830 108 048
3010-66-7 K	7	0642 830 108 063
3010-66-8 K	8	0642 830 108 089
3010-66-9 K	9	0642 830 108 109
3010-66-10 K	10	0642 830 108 124
3010-66-11 K	11	0642 830 108 140
3010-66-12 K	12	0642 830 108 165
3010-66-13 K	13	0642 830 108 180
3010-66-14 K	14	0642 830 108 200
3010-66-16 K	16	0642 830 108 226
3010-66-18 K	18	0642 830 108 241
3010-66-20 K	20	0642 830 108 267
3010-66-22 K	22	0642 830 108 282
3010-66-24 K	24	0642 830 108 302
3010-66-25 K	25	0642 830 108 328
3010-66-28 K	28	0642 830 108 343
3010-66-30 K	30	0642 830 108 369
3010-66-32 K	32	0642 830 108 384
3010-66-36 K	36	0642 830 108 404
3010-66-40 K	40	0642 830 108 420



## Type 1226

REDUCING SLEEVE  
TULEJA REDUKCYJNA



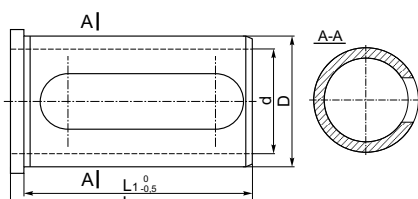
Code No / Kod Nr	D	d	L
0642 412 260 000	20	8	50
0642 412 260 012	20	10	50
0642 412 260 025	20	12	50
0642 412 260 038	20	8	60
0642 412 260 040	20	10	60
0642 412 260 053	20	12	60
0642 412 260 101	25	8	50
0642 412 260 114	25	10	50
0642 412 260 127	25	12	50
0642 412 260 130	25	16	50
0642 412 260 142	25	8	60
0642 412 260 155	25	10	60
0642 412 260 168	25	12	60
0642 412 260 170	25	16	60

Code No / Kod Nr	D	d	L
0642 412 260 183	25	12	75
0642 412 260 196	25	16	75
0642 412 260 203	32	8	60
0642 412 260 216	32	10	60
0642 412 260 229	32	12	60
0642 412 260 231	32	16	60
0642 412 260 244	32	20	60
0642 412 260 257	32	25	60
0642 412 260 260	32	12	75
0642 412 260 272	32	16	75
0642 412 260 285	32	20	75
0642 412 260 298	32	25	75
0642 412 260 305	40	12	75
0642 412 260 359	40	8	75
0642 412 260 361	40	10	75
0642 412 260 318	40	16	75
0642 412 260 320	40	20	75
0642 412 260 333	40	25	75
0642 412 260 346	40	32	75
0642 412 260 407	50	12	75
0642 412 260 410	50	16	75
0642 412 260 422	50	20	75
0642 412 260 435	50	25	75
0642 412 260 448	50	32	75
0642 412 260 450	50	40	75

Typical order/Sposób zamawiania: 0642 412 260 450 lub 1226-50-40-75

## Type 1247

REDUCING SLEEVE  
TULEJA REDUKCYJNA

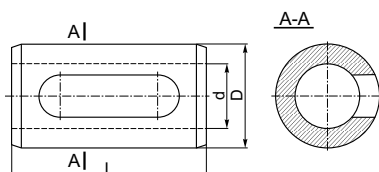


Code No / Kod Nr	D	d	L	L1
0642.412.471.105	32	10	64	60
0642.412.471.207	32	12	64	60
0642.412.471.309	32	16	64	60
0642.412.471.400	32	20	64	60
0642.412.471.502	32	25	64	60
0642.412.472.106	40	10	74	70
0642.412.472.208	40	12	74	70
0642.412.472.300	40	16	74	70
0642.412.472.401	40	20	74	70
0642.412.472.503	40	25	74	70
0642.412.472.605	40	32	74	70

Typical order/Sposób zamawiania: 0642 412 472 605 lub 1247-40-32

## Type 1248

REDUCING SLEEVE  
TULEJA REDUKCYJNA

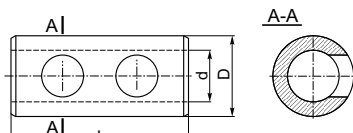


Code No / Kod Nr	D	d	L
0642.412.480.204	32	12	60
0642.412.480.217	32	16	60
0642.412.480.220	32	20	60
0642.412.480.232	32	25	60

Typical order/Sposób zamawiania: 0642 412 480 232 lub 1248-32-25

## Type 1249

REDUCING SLEEVE  
TULEJA REDUKCYJNA



Code No / Kod Nr	D	d	L
0642.412.490.100	20	8	48
0642.412.490.113	20	10	48
0642.412.490.126	20	12	48
0642.412.490.139	20	16	48
0642.412.490.141	25	5	55
0642.412.490.167	25	8	55
0642.412.490.170	25	10	55
0642.412.490.182	25	12	55
0642.412.490.195	25	16	55
0642.412.490.154	25	18	55
0642.412.490.202	25	20	55

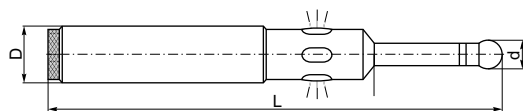
Typical order/Sposób zamawiania: 0642 412 490 202 lub 1249-25-20



## Type 1911

### OPTICAL EDGE FINDER

#### CZUJNIK DOTYKOWY



- Quick locating edges of workpieces
- saving time of tools positioning for milling machines, jog borers and other machine tools
- accuracy 0,005 mm
- when the finder is used in connection with the control system of machine tool or CNC system it gives possibility of:
  - measuring of inside or outside dimension of workpiece
  - centring and measuring of bores diameters
  - measuring of highness and deepness
- using 2 dry batteries 1.5 V (not included).

Code No / Kod Nr	Type	D	d	L
0642 919 110 202	1911-LS	20	10	157

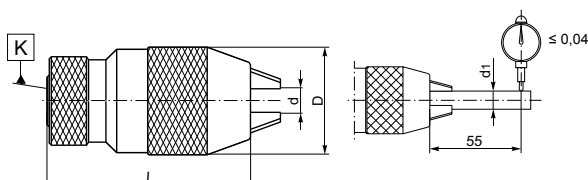
Typical order/Sposób zamawiania: 0642 919 110 202 lub 1911-20x157

- szybkie ustalenie położenia krawędzi przedmiotów obrabianych
- zyskanie na czasie przy pozycjonowaniu narzędzi na frezarkach, wiertarkach i innych obrabiarkach
- dokładność 0,005 mm
- gdy czujnik używany jest w połączeniu z systemem pomiarowym obrabiarki lub systemem CNC możliwe jest:
  - mierzenie wymiarów wewnętrznych i zewnętrznych przedmiotu obrabianego
  - centrowanie i pomiar średnic otworów
  - mierzenie wysokości i głębokości
- dwie baterie 1,5V (nie stanowią wyposażenia)

## Type 5133

### KEYLESS DRILL CHUCKS

#### UCHWYT WIERTARSKI bezkluczkowy



precision / precyzyjny		standard / standardowy		dmax	K	Capacity Zakres	D	L	d1
Code No / Kod Nr	Concentr. error max. Bicie max.	Code No / Kod Nr	Concentr. error max. Bicie max.						
0642 151 331 209	0,04	0642 151 331 211	0,15	10	B12	0,5-10	43	84	6; 10
0642 151 332 200		0642 151 332 212			J2				
0642 151 332 460		0642 151 332 472			J33				
0642 151 331 300	0,04	0642 151 331 313	0,15	13	B12	1-13	50	95	6; 13
0642 151 331 402		0642 151 331 415			B16				
0642 151 332 301		0642 151 332 314			J2				
0642 151 332 403		0642 151 332 416			J6				
0642 151 332 505		0642 151 332 518			J33				
0642 151 335 304	0,04	0642 151 335 317	0,15	16	B16	3-16	58	103	6; 16
0642 151 335 406		0642 151 335 419			B18			109	
0642 151 336 407		0642 151 336 410			J6			103	
0642 151 336 509		0642 151 335 511			J3			109	

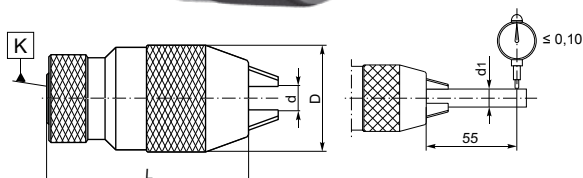
Typical order (class I)/Sposób zamawiania (klasa I): 0642 151 331 209  
lub 5133-10-B12-I

Typical order (class II)/Sposób zamawiania (klasa II): 0642 151 331 211  
lub 5133-10-B12-II

## Type 5134-EKO

### KEYLESS DRILL CHUCKS

#### UCHWYT WIERTARSKI bezkluczkowy



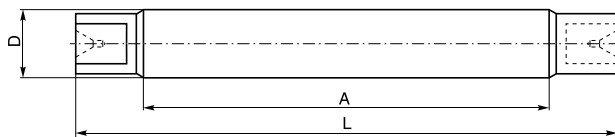
Code No / Kod Nr	dmax	K	Capacity Zakres	D	L	d1
0642 151 341 207	10	B12	0,5-10	40	85,5	6; 10
0642 151 341 309		B16	0,5-10	40	85,5	6; 10
0642 151 342 208		1/2"-20	0,5-10	40	94,5	6; 10
0642 151 341 400	13	B12	1-13	43	84,5	6; 13
0642 151 341 502		B16	1-13	43	84,5	6; 13
0642 151 342 401		3/8"-24	1-13	43	93,5	6; 13
0642 151 342 503		1/2"-20	1-13	43	93,5	6; 13
0642 151 341 706	16	B16	3-16	50	94,5	6; 16
0642 151 341 808		B18	3-16	50	100,5	6; 16
0642 151 342 707		1/2"-20	3-16	50	103,5	6; 16
0642 151 342 809		5/8"-16	3-16	50	103,5	6; 16

Typical order/Sposób zamawiania: 0642 151 342 706 lub 5134-EKO-16-B16

## Type 8500

LATHE MANDRELS plain solid with flat driver

TRZPIENIE TOKARSKIE stałe z zabierakami płaskimi



## DIN 523

Code No / Kod Nr	D	A	L
0642 585 000 008	3	36	55
0642 585 000 100	3,2	45	65
0642 585 000 201	3,5	45	65
0642 585 000 303	4	45	65
0642 585 000 405	4,5	50	70
0642 585 000 507	5	50	70
0642 585 000 609	6	50	70
0642 585 000 700	7	65	85
0642 585 000 802	8	65	85
0642 585 000 904	9	71	95
0642 585 001 009	10	71	95
0642 585 001 100	11	87	115
0642 585 001 202	12	87	115
0642 585 001 304	13	87	115
0642 585 001 406	14	87	115
0642 585 001 508	15	96	130
0642 585 001 600	16	96	130
0642 585 001 701	17	96	130
0642 585 001 803	18	96	130
0642 585 001 905	19	124	160
0642 585 002 000	20	124	160
0642 585 002 101	21	124	160
0642 585 002 203	22	124	160
0642 585 002 305	23	130	170
0642 585 002 407	24	130	170
0642 585 002 509	25	130	170
0642 585 002 600	26	130	170
0642 585 002 702	27	137	185
0642 585 002 804	28	137	185
0642 585 003 000	30	137	185
0642 585 003 204	32	170	220
0642 585 003 408	34	170	220
0642 585 003 500	35	178	230
0642 585 003 601	36	178	230

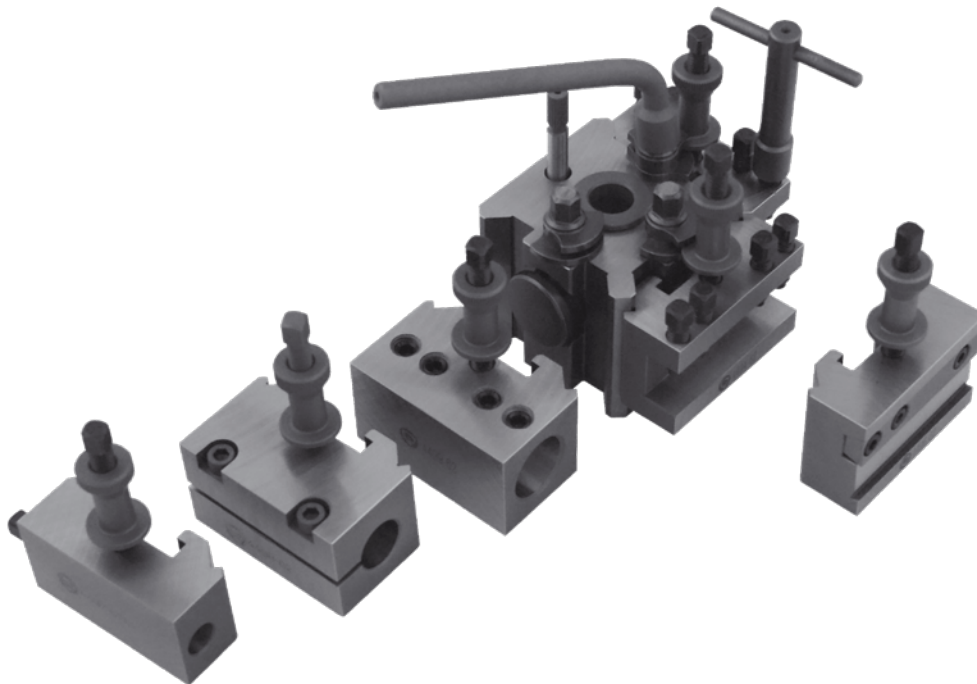
Code No / Kod Nr	D	A	L
0642 585 003 703	37	178	230
0642 585 003 805	38	178	230
0642 585 004 001	40	187	245
0642 585 004 205	42	187	245
0642 585 004 409	44	187	245
0642 585 004 500	45	199	265
0642 585 004 602	46	199	265
0642 585 004 806	48	199	265
0642 585 005 002	50	199	265
0642 585 005 206	52	231	305
0642 585 005 400	54	231	305
0642 585 005 501	55	231	305
0642 585 005 603	56	231	305
0642 585 005 807	58	231	305
0642 585 006 003	60	231	305
0642 585 006 207	62	248	330
0642 585 006 309	63	248	330
0642 585 006 502	65	248	330
0642 585 006 808	68	248	330
0642 585 007 004	70	248	330
0642 585 007 106	71	266	360
0642 585 007 208	72	266	360
0642 585 007 503	75	266	360
0642 585 007 809	78	266	360
0642 585 008 005	80	266	360
0642 585 008 209	82	298	400
0642 585 008 504	85	298	400
0642 585 008 800	88	298	400
0642 585 009 006	90	298	400
0642 585 009 200	92	316	430
0642 585 009 505	95	316	430
0642 585 009 800	98	316	430
0642 585 009 902	100	316	430

Typical order/Sposób zamawiania: 0642 585 000 008 lub 8500-3

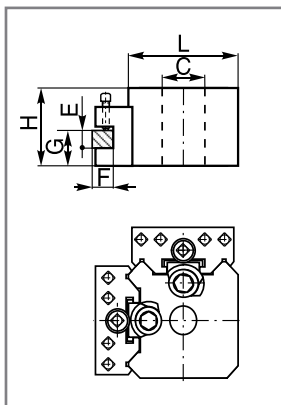
## Type 4414

QUICK CHANGE TOOLPOST

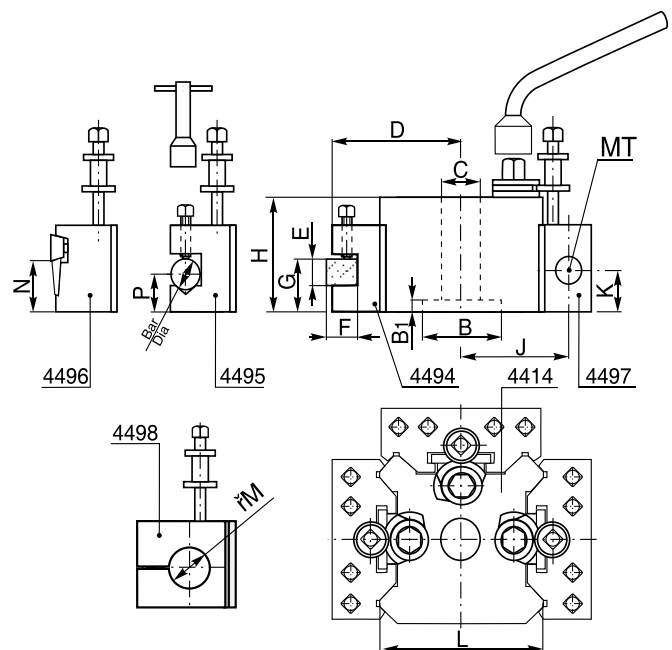
SZYBKOWYMIENNY IMAK TOKARSKI



Size T.00.M  
T.00.B  
T.0

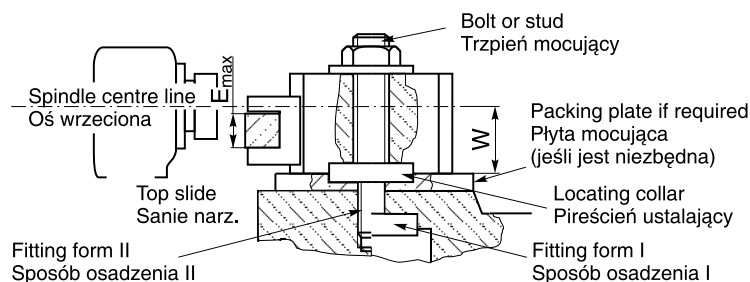


Size T.1  
T.1.X  
T.2  
T.2.T  
T.3  
T.3.HX



Size	H	B	B1	C	D	E	F	Gmax	Gmin	Bar Dia	Pmax	Pmin	Taper	J	Kmax	Kmin	L	N	M
T.00.M	37,0	—	—	11,2	50,0	12	11,0	27,0	17,0	11,0	22,5	12,5	—	—	—	—	58,0	16,0	—
T.00.B	42,0	—	—	16,0	50,0	12	11,0	32,0	17,0	11,0	27,5	12,5	—	—	—	—	58,0	16,0	—
T.0	51,0	22,22	12,5	19,0	62,0	16	13,0	36,5	20,5	16,0	32,0	16,0	1	52,5	28,5	16,0	73,0	27,0	19,0
T.1	63,5	31,75	8,5	19,0	62,0	20	13,0	46,0	30,0	16,0	44,5	25,5	1	52,5	41,0	22,0	73,0	27,0	19,0
T.1.X	73,0	31,75	8,5	19,0	62,0	20	13,0	57,0	35,0	16,0	54,0	32,0	1&2	52,5	51,0	28,5	73,0	27,0	19,0
T.2	71,5	44,45	9,5	25,5	74,5	20	19,0	52,5	36,5	19,0	46,0	24,0	2	65,0	47,5	27,0	97,0	33,5	25,4
T.2.T	76,0	44,45	9,5	25,5	84,0	25	25,5	58,5	39,5	19,0	50,0	24,0	2	70,0	51,0	27,0	106,0	33,5	25,4
T.3	95,5	50,80	11,5	25,5	101,5	32	25,5	74,5	51,0	25,5	51,0	28,5	3	85,5	58,2	36,5	125,5	39,5	38,0
T.3.HX	108,0	50,80	11,5	25,5	101,5	32	25,5	84,0	62,0	25,5	65,0	41,0	3	85,5	58,2	36,5	125,5	39,5	38,0

## Type 4414



Size	W	max. tools size max.wym.narz. E <sub>max</sub>	bolt size średnica trzp.
T.00	33,5-19,0	12	11,5
T.0	36,5-21,0	16	16,0
T.1	46,0-30,0	20	16,0
T.2	54,0-36,5	20	16,0
T.2.T	55,5-40,0	25	16,0
T.3	73,0-51,0	32	24,0

### Fitting Instructions

The Toolpost body is fixed to the centre lathe topslide with a centre bolt or stud (see sketch). Where a tee slot is provided, a tee bolt of the appropriate size is employed.

The body is set square on the topslide, flat face towards the operator; a hole should then be drilled and reamed into the topslide to register with the locating pin. The depth of this hole need not exceed 8 mm.

The precision ground recess in the base of the main body is for locating purposes and a collar should be fitted as illustrated.

### Operating Instructions

1. Tool height is adjusted by the knurled sleeve and locked by the screw with the key provided.
2. Clamping and release of the toolholders is with a single action of the operating key.
3. Tools should be re-ground without removing them from the toolholders.
4. Sets of toolholders can be stored for specific component production and called up in the same way as other tooling fixtures.
5. The number of operations and tool changes is limited only by the number of toolholders used. Toolholders are available separately for all sizes of Quick Change Toolposts

### Instrukcja montażu

Korpus imaka osadzony jest na saniach narzędziowych tokarki przy pomocy trzpienia jak na rysunku. W otworze przeznaczonym do mocowania zwykłego imaka (np. czteronożowego), osadzony jest odpowiedniej wielkości trzpień mocujący imaka szybkowymennego.

Korpus jest umieszczony kwadratową podstawą na górnej powierzchni sań: płaską powierzchnią bez prowadnic zwrócony ku operatorowi. Otwór na trzpień ustalający powinien być wiercony i rozwierany bazując na położeniu trzpienia w korpusie imaka a jego głębokość nie musi być większa niż 8 mm.

Precyzyjnie wykonany stopień otworu w korpusie służy do ustalenia imaka z wykorzystaniem pierścienia jak na rysunku.

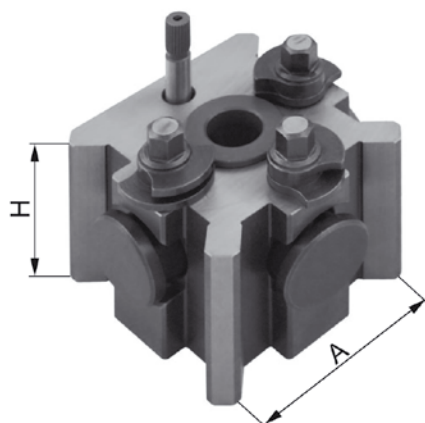
### Instrukcja Obsługi

1. Wysokość narzędzia jest regulowana radełkowaną tulejką i ustalana śrubą przy pomocy klucza.
2. Mocowanie i zwalnianie oprawki odbywa się jednym ruchem załączonego klucza.
3. Wymiana narzędzia odbywa się łącznie z oprawką narzędziową.
4. Zestawy oprawek narzędziowych mogą być dowolnie kompletowane wg potrzeb produkcji i zamawiane podobnie jak inne wyroby narzędziowe.
5. Ilość wykonywanych operacji z danego imaka i możliwych zmian narzędzi ograniczona jest jedynie ilością posiadanych oprawek narzędziowych. Oprawki są dostępne oddzielnie dla wszystkich wymiarów imaków wg katalogu, oraz w dowolnej ilości poszczególnych rodzajów.

## Type 4414

### QUICK CHANGE TOOLPOST

### SZYBKOWYMIENNY IMAK TOKARSKI

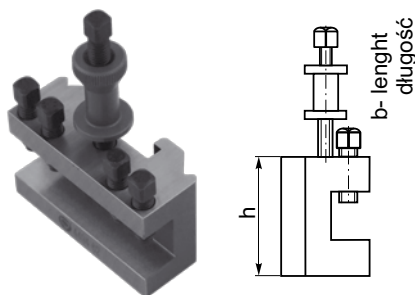


Code No / Kod Nr	TYPE	A x H	LATHE CAPACITY
0642 444 141 200	T.00.M	48x37	Up to 89 mm
0642 444 141 301	T.00.B	48x42	Up to 89 mm
0642 444 142 109	T.0	62x51	Up to 114 mm
0642 444 142 200	T.1	62x63	114 mm to 127 mm
0642 444 142 302	T.1.X	62x73	114 mm to 127 mm
0642 444 141 607	T.2	82x71	127 mm to 203 mm
0642 444 141 505	T.2.T	82x76	127 mm to 203 mm
0642 444 142 404	T.3	100x92	203 mm to 292 mm
0642 444 142 506	T.3.HX	100x108	203 mm to 292 mm

Dimensions in mm \* Wymiary w mm

## Type 4494

STANDARD TOOLHOLDERS  
OPRAWKA STANDARDOWA

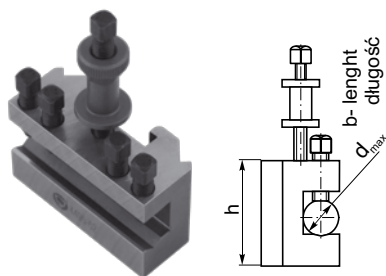


Code No / Kod Nr	Size Wielk.	USED ON Stosować do	b x h
0642 444 941 106	48	T.00M, T.00B	58x27
0642 444 942 107	62N	T.0	73x35
0642 444 942 209	62	T.1, T.1X	73x44
0642 444 941 401	82N	T.2	98,5x50
0642 444 941 300	82	T.2T	98,5x57
0642 444 942 300	100	T.3, T.3HX	124x70

Dimensions in mm \* Wymiary w mm

## Type 4495

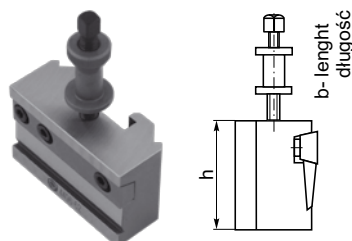
VEE TOOLHOLDERS  
OPRAWKA V



Code No / Kod Nr	Size Wielk.	USED ON Stosować do	Ødmax	b x h
0642 444 951 104	48	T.00M, T.00B	11,0	58x27
0642 444 952 105	62N	T.0	16,0	73x35
0642 444 952 207	62	T.1, T.1X	16,0	73x44
0642 444 951 400	82N	T.2	19,0	98,5x50
0642 444 951 308	82	T.2T	19,0	98,5x57
0642 444 952 309	100	T.3, 3HX	25,5	124x70

## Type 4496

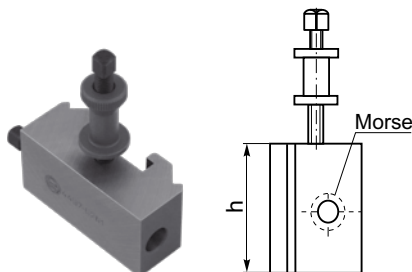
P/O TOOLHOLDERS  
OPRAWKA SPECJALNA



Code No / Kod Nr	Size Wielk.	USED ON Stosować do +	b x h
0642 444 961 102	48	T.00M, T.00B	58x32
0642 444 962 205	62	T.0, T.1, T.1X	73x47,5
0642 444 961 306	82	T.2, T.2T	98,5x57
0642 444 962 307	100	T.3, T.3HX	124x70

## Type 4497

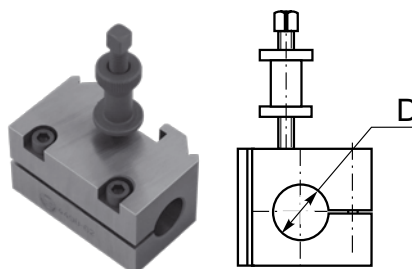
MORSE TAPER TOOLHOLDERS  
OPRAWKA Z GNIAZDEM MORSE'A



Code No / Kod Nr	Size Wielk.	USED ON Stosować do	Morse
0642 444 972 101	62/1N	T.0	1
0642 444 972 203	62/1	T.1, T.1X	1
0642 444 972 229	62/2	T.1, T.1X	2
0642 444 971 304	82/2	T.2, T.2T	2
0642 444 971 406	82/3	T.2, T.2T	3
0642 444 972 305	100/3	T.3, T.3HX	3

## Type 4498

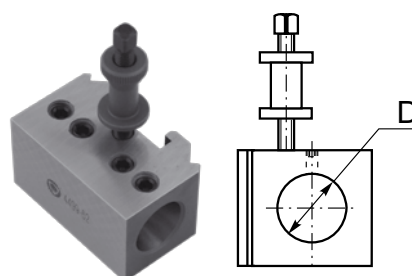
TOOLHOLDERS for boring bars  
OPRAWKA z gniazdem walcowym



Code No / Kod Nr	Size Wielk.	USED ON Stosować do	ØD
0642 444 980 200	62	T.0, T.1, T.1X	19
0642 444 980 301	82	T.2, T.2T	25,4
0642 444 980 505	100	T.3, T.3HX	38

## Type 4499

TOOLHOLDERS for boring bars  
OPRAWKA z gniazdem walcowym



Code No / Kod Nr	Size Wielk.	USED ON Stosować do	ØD
0642 444 990 208	62	T.0, T.1, T.1X	25
0642 444 990 300	82	T.2, T.2T	32
0642 444 990 401	100	T.3, T.3HX	40

## SPARE PARTS FOR TOOLPOST CZĘŚCI ZAMIENNE DO IMAKA TOKARSKIEGO

CLAMP PAD  
DOCISK



Code No / Kod Nr	USED ON / Stosować do
0642 981 440 002	T.00M
0642 981 440 104	T.00B
0642 981 440 206	T.0, T.1, T.1X
0642 981 440 308	T.2
0642 981 440 400	T.2T
0642 981 440 501	T.3, T.3HX

STOP  
TULEJKA



Code No / Kod Nr	USED ON / Stosować do
0642 981 449 013	T.00M
0642 981 449 000	T.00B
0642 981 449 102	T.0, T.1, T.1X
0642 981 449 204	T.2, T.2T
0642 981 449 306	T.3, T.3HX

CLAMP BOLT  
MIMOŚRÓD



Code No / Kod Nr	USED ON / Stosować do
0642 981 441 003	T.00M
0642 981 441 105	T.00B
0642 981 441 207	T.0, T.1, T.1X
0642 981 441 309	T.2
0642 981 441 400	T.2T
0642 981 441 502	T.3, T.3HX

T WRENCH  
KLUCZ Z GNIAZDEM 4-KT.



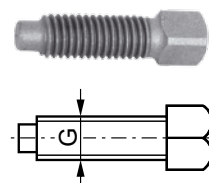
Code No / Kod Nr	USED ON / Stosować do	A
0642 981 700 201	T0, T1, T1X	8,3
0642 981 700 507	T2, T2T	10
0642 981 700 802	T3, T3HX	13,5

LOCATION PIN  
KOLEK USTALAJĄCY



Code No / Kod Nr	USED ON / Stosować do
0642 981 442 208	T.0
0642 981 442 300	T.1, T.1X
0642 981 442 401	T.2, T.2T
0642 981 442 503	T.3
0642 981 442 605	T.3HX

STOP SCREW  
ŚRUBA



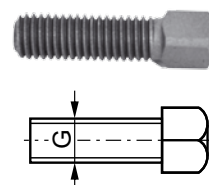
Code No / Kod Nr	USED ON / Stosować do	G
0642 982 701 701	T.00M	M5x16
0642 982 701 600	T.00B	M5x16
0642 982 701 009	T.2, T.2T	M8x25
0642 982 701 202	T.0, T.1, T.1X	M10x30
0642 982 701 406	T.3, T.3HX	M12x40

SPRING  
SPRĘŻYNA



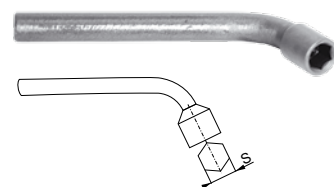
Code No / Kod Nr	USED ON / Stosować do
0642 981 443 005	T.00M, T.00B
0642 981 443 107	T.0, T.1, T.1X
0642 981 443 209	T.2, T.2T
0642 981 443 300	T.3, T.3HX

SQUARE HEAD SCREW  
ŚRUBA



Code No / Kod Nr	USED ON / Stosować do	G
0642 982 701 905	T.00M	M5x16
0642 982 701 803	T.00B	M5x16
0642 982 701 100	T.0, T.1, T.1X	M8x25
0642 982 701 304	T.2, T.2T	M10x30
0642 982 701 508	T.3, T.3HX	M12x40

HEX WRENCH  
KLUCZ Z GNIAZDEM 6-KT.



Code No / Kod Nr	USED ON / Stosować do	S
0642 981 446 008	T.00M, T.00B	8
0642 981 446 100	T.0, T.1, T.1X	10
0642 981 446 201	T.2, T.2T	14
0642 981 446 303	T.3, T.3HX	17,5

STUD  
WKREŃ



Code No / Kod Nr	USED ON / Stosować do
0642 982 702 000	T.00M
0642 982 702 101	T.00B
0642 982 702 203	T.0, T.1, T.1X
0642 982 702 305	T.2, T.2T
0642 982 702 407	T.3, T.3HX

T WRENCH  
KLUCZ Z GNIAZDEM 6-KT.



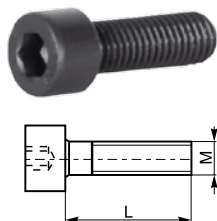
Code No / Kod Nr	USED ON / Stosować do
0642 981 448 000	T00M, T00B



## ACCESSORIES • CZĘŚCI ZAMIENNE

### Screw

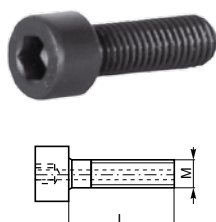
#### Śruba



Code No / Kod Nr	M	L	
0642 981 167 207	M12	35	U-7790/0
0642 981 168 430	M6	25	W-1091/0
0642 981 168 442	M10	25	W-1092/0
0642 981 168 455	M12	30	W-1093/0
0642 981 168 468	M16	40	W-1094/0
0642 981 168 483	M10	30	W-1095/0
0642 981 168 496	M12	40	W-1096/0
0642 981 168 503	M16	40	W-1097/0
0642 981 168 516	M20	50	W-1098/0

### Screw

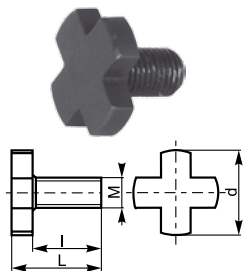
#### Śruba



Code No / Kod Nr	M	L	
0642 981 892 162	M12	40	U-1414/0
0642 985 335 830	M16	50	U-2042/0
0642 981 892 121	M8	40	U-5353/0
0642 981 892 119	M8	70	U-6520/0
0642 981 734 305	M10	80	U-6523/0
0642 981 892 147	M10	80	U-6524/0
0642 981 892 106	M6	35	U-7682/0
0642 981 892 134	M10	40	U-7683/0

### Cutter retaining screw

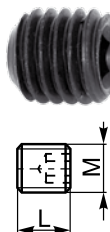
#### Śruba mocująca



Code No / Kod Nr	M	I	d	L	
0642 981 742 108	M8	16	20	22	U-0620/0
0642 981 742 200	M10	18	28	25	U-0621/0
0642 981 742 301	M12	22	35	30	U-0622/0
0642 981 742 403	M16	26	42	35	U-0623/0
0642 981 742 505	M20	30	52	40	U-0624/0
0642 981 742 607	M24	36	63	48	U-0625/0

### Screw

#### Wkręt



Code No / Kod Nr	M	L	
0642 176 222 400	M14x1	7	S-2628/0
0642 981 763 337	M6	6	U-1997/0
0642 981 761 103	M6	10	U-4131/0
0642 981 761 205	M8	10	U-4132/0
0642 981 761 307	M10	12	U-4133/0
0642 981 761 409	M12	16	U-4134/0
0642 981 761 500	M14	16	U-4135/0
0642 981 761 602	M16	16	U-4136/0
0642 981 762 002	M18x2	20	U-4137/0
0642 981 762 104	M20x2	20	U-4138/0
0642 981 762 206	M24x2	25	U-4139/0
0642 981 762 308	M20x2	25	U-5870/0
0642 981 764 004	M14	15	U-5887/0
0642 981 763 003	M16	13	U-5888/0
0642 981 762 400	M16x1	6,5	U-6755/0
0642 981 763 105	M16	10	U-6756/0
0642 981 763 207	M18x2	9,5	U-6757/0
0642 981 160 302	M8	6	U-7381/0
0642 981 160 506	M10	10	U-7382/0

### Screw

#### Wkręt



Code No / Kod Nr	M	L	
0642 981 759 000	M8	16	U-0293/0
0642 981 759 013	M10	16	U-0757/0
0642 981 759 026	M5	12	U-1599/0
0642 981 759 039	M6	16	U-6317/0
0642 981 759 041	M12	16	U-6318/0
0642 981 759 054	M16	20	U-6793/0
0642 981 759 067	M20	18	U-6794/0

### Nut

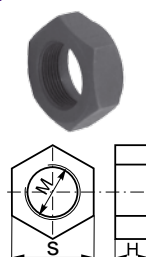
#### Nakrętka



Code No / Kod Nr	M	H	
0642 981 541 000	M12x1	6	S-0881/0
0642 981 541 102	M16x1,5	7	S-0884/0
0642 981 541 204	M20x1,5	8	S-0887/0
0642 981 541 306	M22x1,5	9	S-0891/0
0642 981 541 408	M27x2	12	S-0894/0
0642 981 541 500	M30x2	12	S-0897/0
0642 981 541 601	M36x3	14	S-0901/0
0642 981 541 703	M45x3	16	S-0905/0
0642 981 541 805	M52x3	16	S-0909/0

### Nut

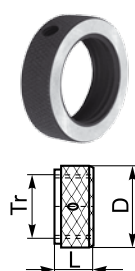
#### Nakrętka



Code No / Kod Nr	M	H	S	
0642 985 870 001	12x1,5	10,5	18	S-0772/0
0642 985 870 103	16x1,5	12	24	S-0774/0
0642 985 870 205	22x1,5	15,5	32	S-0776/0
0642 985 870 307	27x1,5	17,5	41	S-0778/0
0642 985 870 409	36x1,5	21	55	S-0780/0
0642 985 870 500	48x1,5	23	75	S-0782/0
0642 985 870 602	68x1,5	25,5	100	S-0784/0

### Nut

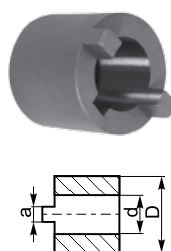
#### Nakrętka



Code No / Kod Nr	Tr	D	L	
0642 981 300 002	Tr16x1,5	24,6	12	Z-1275/0
0642 981 300 104	Tr20x2	31,6	12	Z-1276/0
0642 981 300 308	Tr28x2	39,6	12	Z-1278/0
0642 981 300 400	Tr36x2	49,6	14	Z-1279/0
0642 981 300 501	Tr48x2	66,6	18	Z-1280/0

### Driving Ring

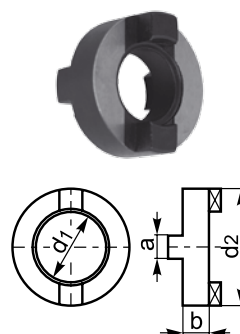
#### Zabierak



Code No / Kod Nr	a	d	D	
0642 981 540 000	4	10	18	S-0880/0
0642 981 540 101	4	13	21	S-0883/0
0642 981 540 203	5	16	27	S-0886/0
0642 981 540 305	6	19	32	S-0890/0
0642 981 540 407	7	22	39	S-0893/0
0642 981 540 509	8	27	46	S-0896/0
0642 981 540 600	10	32	56	S-0900/0
0642 981 540 702	12	40	65	S-0904/0
0642 981 540 804	14	50	80	S-0908/0

### Driving Ring

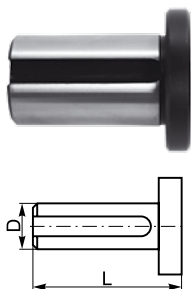
#### Zabierak



Code No / Kod Nr	d1	d2	a	b	
0642 981 741 107	16	32	8	10	U-1364/0
0642 981 741 209	22	40	10	12	U-1365/0
0642 981 741 300	27	48	12	12	U-1366/0
0642 981 741 402	32	58	14	14	U-1367/0
0642 981 741 504	40	70	16	14	U-1368/0
0642 981 741 606	50	90	18	16	U-1369/0

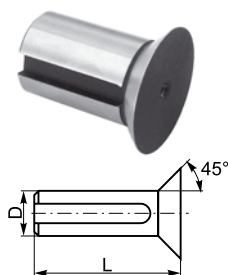


## Cap Docisk



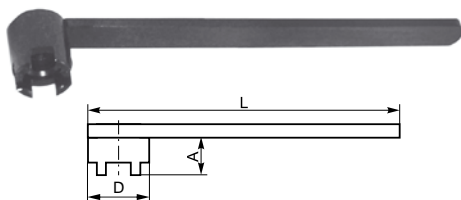
Code No / Kod Nr	L	D	
0642 981 732 008	52	16	U-6510/0
0642 981 732 100	82	16	U-6511/0
0642 981 732 201	52	22	U-6512/0
0642 981 732 303	82	22	U-6513/0
0642 981 732 405	52	27	U-6514/0
0642 981 732 507	82	27	U-6515/0
0642 981 732 609	52	32	U-6516/0
0642 981 732 700	82	32	U-6517/0
0642 981 732 802	52	40	U-6518/0
0642 981 732 904	82	40	U-6519/0

## Cap Docisk kątowy



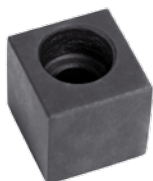
Code No / Kod Nr	L	D	
0642 981 732 010	52	16	U-6510/1
0642 981 732 012	82	16	U-6511/1
0642 981 732 214	52	22	U-6512/1
0642 981 732 316	82	22	U-6513/1
0642 981 732 418	52	27	U-6514/1
0642 981 732 510	82	27	U-6515/1
0642 981 732 611	52	32	U-6516/1
0642 981 732 713	82	32	U-6517/1
0642 981 732 815	52	40	U-6518/1
0642 981 732 917	82	40	U-6519/1

## Clamping Key Klucz

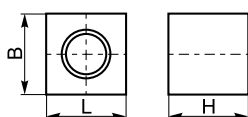


Code No / Kod Nr	Size Wielk.	L	A	D
0642 198 760 106	13	160	16	18
0642 198 760 208	16	180	20	22
0642 198 760 300	22	200	23	28
0642 198 760 401	27	225	32	35
0642 198 760 503	32	250	36	42
0642 198 760 605	40	280	40	52
0642 198 760 707	50	315	45	63
0642 198 760 809	60	355	50	76

## Square drive Kamień



Code No / Kod Nr	B	L	H	
0642 981 173 100	15,9	16,5	16	U-6227/0



## Key Wpust



Code No / Kod Nr	L	b	h	
0642 981 748 001	20	4	5	U-1355/0
0642 981 748 103	25	6	5	U-1356/0
0642 981 748 205	25	7	8	U-1357/0
0642 981 748 307	32	8	7,6	U-1358/0
0642 981 748 409	32	10	8,6	U-1359/0
0642 981 748 500	36	12	9	U-1360/0

## Key Wpust



Code No / Kod Nr	L	b	h	
0642 981 733 009	45	4	4	U-6526/0
0642 981 733 100	75	4	4	U-6527/0
0642 981 733 202	45	6	6	U-6528/0
0642 981 733 304	75	6	6	U-6529/0
0642 981 733 406	45	7	7	U-6530/0
0642 981 733 508	75	7	7	U-6531/0
0642 981 733 600	45	8	7	U-6532/0
0642 981 733 701	75	8	7	U-6533/0
0642 981 733 803	45	10	8	U-6534/0
0642 981 733 905	75	10	8	U-6535/0

## Key Wpust



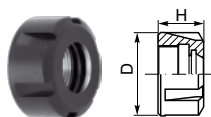
Code No / Kod Nr	b	h	
0642 981 542 157	6	9	S-0898/0
0642 981 542 001	3	3,7	U-0097/0
0642 981 542 116	5	6,5	U-0098/0
0642 981 542 409	12	19	U-0106/0
0642 981 542 103	4	5	U-0648/0
0642 981 542 205	8	11	U-0649/0
0642 981 542 307	10	16	U-0650/0

## Drive tang Kamień

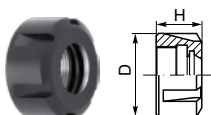


Code No / Kod Nr	B	H	L	
0642 981 731 200	12	9	24	S-2111/0
0642 981 731 302	14	12	28	S-2114/0
0642 981 731 007	8	7	17	S-2117/0
0642 981 731 109	10	8	20,6	S-2121/0
0642 981 731 002	16	12	32	S-2124/0
0642 981 731 903	18	16	33	U-5974/0
0642 981 731 102	15,9	16	20	U-6064/0
0642 981 280 204	25,4	25	34,5	U-6065/0
0642 981 280 306	25,4	25	29,5	U-6066/0

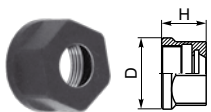
Code No / Kod Nr	B	H	L	
0642 981 720 008	8	8	16,8	W-1945/0
0642 981 720 010	10	10	20,4	W-1946/0
0642 981 720 023	12	12	24,1	W-1947/0
0642 981 720 036	14	14	27,8	W-1948/0
0642 981 720 049	16	16	31,8	W-1949/0
0642 981 720 051	14	12	22,8	W-3649/0
0642 981 720 064	16	12	23,8	W-3651/0

**NUTS**  
**NAKRĘTKI**
**KEYS**  
**KLUCZE**
**Type 9833**


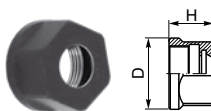
Code No / Kod Nr	For Do	DIN 6499	D	H	G
0642 198 330 102	ER16	D16	32	17,5	M22x1,5
0642 198 330 204	ER20	D20	35	19,0	M25x1,5
0642 198 330 306	ER25	D25	42	20,0	M32x1,5
0642 198 330 408	ER32	D32	50	22,5	M40x1,5
0642 198 330 500	ER40	D40	63	25,5	M50x1,5

**Type 9833ES**


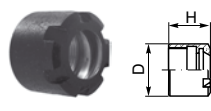
Code No / Kod Nr	For Do	DIN 6499	D	H	G
0642 798 332 104	ER16	D16	32	17,5	M22x1,5
0642 798 332 206	ER20	D20	35	19,0	M25x1,5
0642 798 332 308	ER25	D25	42	20,0	M32x1,5
0642 798 332 400	ER32	D32	50	22,5	M40x1,5
0642 798 332 501	ER40	D40	63	25,5	M50x1,5

**Type 9833-D**


Code No / Kod Nr	For Do	D	H	G
0642 198 331 001	ER11	19	11,0	M14x0,75
0642 198 331 103	ER16	28	17,5	M22x1,5
0642 198 331 205	ER20	34	20,0	M25x1,5

**Type 9833-D ES**


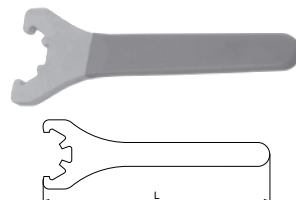
Code No / Kod Nr	For Do	D	H	G
0642 198 332 145	ER16	19	11,0	M14x0,75
0642 198 332 247	ER20	28	17,5	M22x1,5

**Type 9833-S**


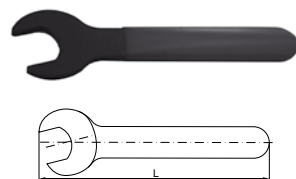
Code No / Kod Nr	For Do	D	H	G
0642 198 229 900	ER11	16	12	M13x0,75
0642 198 330 000	ER16	22	18	M19x1
0642 198 330 026	ER20	28	19	M24x1
0642 198 330 041	ER25	35	20	M30x1

**Type 9836**

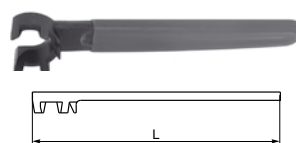

Code No / Kod Nr	For Do	D	H	G
0642 198 360 018	DA100	27	40	15/16"-20
0642 198 360 107	DA180	39	23	1.1/4"-12
0642 198 360 300	DA200	27	24	3/4"-16



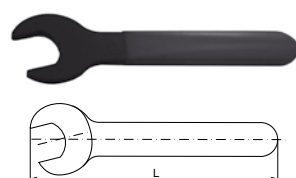
Code No / Kod Nr	For Do	L
0642 981 771 804	ER16	150
0642 981 771 817	ER20	170
0642 981 771 820	ER25	190
0642 981 771 832	ER32	240
0642 981 771 845	ER40	270
0642 981 771 858	ER50	340



Code No / Kod Nr	For Do	L
0642 981 771 921	ER11	125
0642 981 771 950	ER16	170
0642 981 771 975	ER20	140



Code No / Kod Nr	For Do	L
0642 198 770 056	ER11	95
0642 198 770 104	ER16	119
0642 198 770 206	ER20	131
0642 198 770 308	ER25	143



Code No / Kod Nr	For Do	L
0642 981 771 962	DA100	170
0642 981 771 934	DA180	170
0642 981 771 962	DA200	170